

Xerox® VersaLink® Printers and Multifunction Printers



EVALUATOR GUIDE



Table of Contents

This Evaluator Guide introduces you to the Xerox® VersaLink® Printers and Multifunction Printers and explains their key features and performance advantages.

INTRODUCING XEROX® CONNECTKEY® TECHNOLOGY

3 Overview

INTRODUCING OUR VERSALINK® FAMILY OF PRODUCTS

4 Overview

EVALUATING WORKGROUP PRINTERS AND MULTIFUNCTION PRINTERS

5 Count On It

10 Well Connected

12 Make It Yours

13 Introducing Xerox® VersaLink®
Printers and Multifunction
Printers

SPECIFICATIONS, CONFIGURATION SUMMARIES AND OPTIONS

14 Xerox® VersaLink® B400
Printer and B405
Multifunction Printer

15 Xerox® VersaLink® C400 Color
Printer and C405 Color
Multifunction Printer

16 Xerox® VersaLink® C500 Color
Printer and C505 Color
Multifunction Printer

17 Xerox® VersaLink® B600
Printer and B605
Multifunction Printer

18 Xerox® VersaLink® B610
Printer

19 Xerox® VersaLink® B615
Multifunction Printer

20 Xerox® VersaLink® C600
Color Printer

21 Xerox® VersaLink® C605 Color
Multifunction Printer

22 Xerox® VersaLink®
B7025/B7030/B7035
Multifunction Printer

23 Xerox® VersaLink® C8000
and C9000 Color Printers

24 Xerox® VersaLink® C7020/
C7025/C7030 Color
Multifunction Printer

AWARDS

25 Xerox Awards

Xerox® Connectkey® Technology — the nexus of your complete productivity ecosystem

Today's workplace has evolved beyond the ability of any single machine to fulfill productivity needs of the modern, mobile, always connected workforce. It's time to stop thinking about printers as stand-alone, task-specific workhorses, and start demanding more up-to-date, useful — and usable — solutions.



INTUITIVE USER EXPERIENCE

A familiar way to interact that includes a tablet-like experience with gesture-based touchscreen controls and easy customization.

MOBILE AND CLOUD READY

Instant connectivity to cloud and mobile devices right from the user interface, with access to cloud-hosted services that let you work where, when and how you want.

BENCHMARK SECURITY

Comprehensive security that includes a powerful mix of built-in features and services to prevent unauthorized access, detect suspect or malicious behavior, and protect data and documents.

ENABLES NEXT GENERATION SERVICES

Easy integration of Xerox® Intelligent Workplace Services. Enables remote monitoring of service delivery and consumables.

GATEWAY TO NEW POSSIBILITIES

Instantly extend your capabilities with real-world apps from the Xerox App Gallery, or talk with one of our partners to design and develop a solution specific to your business needs.

Find out more about how you'll work smarter at www.connectkey.com.

Xerox® VersaLink® Family of Products

The Perfect Assistant for Every Office

The VersaLink family of products offers a truly compelling value with an affordable total cost of ownership. The innovative functionality built into each product extends its value beyond the printer and multifunction printer (MFP), and maximizes your investment by enabling greater freedom to get work done on your terms.



COUNT ON IT

VersaLink devices consistently and flawlessly deliver the performance and reliability that even the most demanding offices rely on to get their work done more efficiently.

VersaLink devices offer complete dependability through both reliability and benchmark security.

- Highly dependable—hardware and software reliability
- Hassle-free productivity
- Comprehensive security to safeguard customers' data, delivering the security capabilities every type of business demands
- Inspire confidence—it just works every time
- Simplified device installation and management, without the need for IT support

WELL CONNECTED

Connect to what you want, how you want. Wherever your work takes you, Xerox gives you the freedom and convenience to work when you want, where you want, with the devices you use every day.

In line with the shift toward mobile device reliance, VersaLink devices meet the expectation of the most advanced office technologies.

- Enable mobile workers to leverage the capabilities of printers and MFPs in the manner that works best for them (secure mobile connectivity)
- Extend traditional MFP functionality to mobile platforms with the Xerox® Mobile Link App
- Connect users to the services they use today, such as cloud repositories and popular third-party apps (speed up information sharing and streamline multistep workflows)

MAKE IT YOURS

VersaLink devices provide a balance of simplicity and efficiency, presented in a familiar and comfortable interface that makes accomplishing tasks intuitive. It means less time learning and more time doing.

VersaLink product design intent is heavily influenced by ongoing changes in workforce behavior.

- Highly intuitive user experience strikes a balance between simplicity and efficiency with the ability to personalize and customize for each user
- Range of useful built-in apps with the ability to add more (build your own)
- Blending the expected performance of today's devices with the unique needs of using a printer or MFP

Count On It

Reliable, productive and easy to use. With Xerox® VersaLink® printers and multifunction printers, you'll consistently and flawlessly perform the tasks that make your business work more efficiently.

RELIABLE

With a range of features and functionality you'll use every day, VersaLink devices take reliability and workplace efficiency to a new level of ease and automation right out of the box.

- **Xerox® Standard Accounting.** Manage, track and report device usage to control print quantities and chargeback options for print, scan, copy and fax. Advanced solutions are available for Network Accounting from Xerox Business Innovation Partners, delivering even more helpful tools, such as ID and proximity card systems for larger office environments.
- **Duplex printing.** With automatic two-sided printing, multi-page print jobs are automatically printed on the front and back side of each sheet of paper for increased efficiency and reduced paper usage.
- **Single-Pass Duplex Automatic Document Feeder.** With many of our VersaLink multifunction printers, you can get even more reliability and longevity with fewer moving parts on our Single-Pass Duplex Automatic Document Feeder (DADF).
- **Auto-Color Scanning (ACS).** This feature allows the device controller to check if the document is color or black-and-white, and then adjust accordingly.
- **Genuine Xerox® supplies.** Using genuine Xerox® toner in your VersaLink printer or multifunction printer will ensure that prints are delivered with consistent quality and keep your device running at optimal level and free from damage by inferior third-party supplies. Testing conducted by independent printer evaluation laboratories proved genuine Xerox® supplies are more reliable and deliver up to 27% higher page

yields than aftermarket alternatives.

When non-Xerox® supplies are detected by the device, a warning screen will appear informing the customer that genuine Xerox® supplies were not detected.

- **Automated supplies notification and ordering.** Customers enrolling or participating in one of the excellent metered or managed print service programs get the added benefit of Automatic Supplies Replenishment (ASR). With ASR, our VersaLink devices can automatically talk to our ordering systems, giving you a Xerox virtual administrator that continuously watches over your fleet so you don't have to—at no extra cost. No need to react when the device tells you that toner is running low. The ASR service will instantly put in an order for the supplies, without human intervention.
 - **Front of device access.** Customer replaceable toner cartridges are especially easy to replace on VersaLink devices. No need to rotate or move the device when performing routine maintenance tasks.
 - **Remote Service Functionality.** Users can perform troubleshooting and diagnostics right from their computer, eliminating multiple trips to the printer or multifunction printer. Troubleshooting hints and tips are also provided to the user, right at the device UI, keeping the device up and running without additional trips.
 - **Remote Services Upgrade.** Using this feature, administrators can perform firmware upgrades to VersaLink printers and multifunction printers from a central location, rather than traveling to the actual site of the device.
- **ENERGY STAR® qualified.** VersaLink printers and multifunction printers meet the stringent ENERGY STAR requirements for energy use and the EPEAT® comprehensive environmental rating system.
 - **Certifications and sustainability.** At Xerox, we work to ensure that our devices meet or exceed standards so that Xerox® devices are engineered in an environmentally smart and sustainable way. Learn more by visiting www.xerox.com/environment.
 - **Energy management.** With Cisco EnergyWise®, enabled by Xerox® Power MIB (Management Information Base), you can control, manage and report your device's power consumption information, and set optimal power states and timeout intervals.
 - **Xerox® Workplace Solutions.** Boost productivity and reduce costs with our modular print management and mobility solution. Control and manage your printer fleet while enabling mobile productivity with simplified workflows, convenience and security—for any brand printer, anywhere. Choose between two hosting options, each with its own features and licensing specifics:
 - **Xerox® Workplace Suite.** On site with your server. This is the ideal choice for those who need productivity for mobile devices and workers, but have additional requirements for data control.
 - **Xerox® Workplace Cloud.** Simple setup and cloud administration. This is an ideal choice for organizations with limited access to IT support, companies with more than one network or looking to reduce their infrastructure.

Count On It (cont'd)

PRODUCTIVE

Revolutionize your workflow—and get more done—with time-saving productivity enhancers and new capabilities that work without additional IT investment.

- **Print Around.** Print Around is an automatically enabled feature that eliminates print bottlenecks and directs print job flow. If a job needs resources, (such as mismatched media type, color or size), other print jobs will go around the held job. This keeps jobs moving when there is an issue with one print job.
- **Consistent operation across products.** A common look and feel across all VersaLink devices makes it easy and intuitive for users to go from one Xerox® product to another without additional training.
- **LAN Fax.** Use this feature to send faxes directly from your PC without printing the document or going to your Xerox® multifunction printer. Through the driver for the multifunction printer, you can send a document via fax to other fax machines. This feature requires the installation of Walk-up Fax.
- **Fax Forward to Email.** When sending and/or receiving faxes, this feature allows a copy of the fax to be forwarded to an email address; enabling archiving as well as saving paper retrieval and distribution time.
- **Print from and Scan to USB.** Conveniently print your document directly from your USB device or scan your document directly to it, right from the main screen of the user interface.
- **Saved Job.** Saved Job is the perfect solution for files that need to be printed on a regular basis. These documents are stored on the printer or MFP and can be reprinted on demand from the front panel.
- **Digitize your current paper-based workflows.** VersaLink multifunction printers can scan documents to create text-searchable PDFs and single and multi-page PDFs for easy archiving, organizing and searching. This is made possible with built-in optical character recognition (OCR), a critical component in digitizing any paper-based workflow.
- **True multi-tasking.** With this feature, VersaLink multifunction printers can copy, print, fax and scan at the same time. There is no wasted time for walkup users at the device and all jobs are held in the same queue.
- **Scan and Fax Preview.** With VersaLink multifunction printers, users can ensure accuracy by previewing the scanned file before sending it. This feature also allows users to rotate pages, as well as add additional pages to the scan or fax prior to sending.
- **Annotation.** Annotation allows users to add Page Numbers, Comments, or Dates onto copies. Annotation also supports Bates Stamping, allowing placement of identifying numbers commonly used in the legal and medical fields of copied documents.
- **Common Driver Platform.** VersaLink printers and multifunction printers include common print drivers, which feature clear graphical user interfaces that provide for easy, intuitive interaction with the device. The drivers provide immediate desktop access to all Xerox® device output functions, as well as bidirectional information, indicating device and job status, currently loaded paper sizes and types, and installed options, eliminating the need to consult other software for information. Easy-to-understand icons access the most commonly used functions, such as paper selection and document finishing. With the Saved Settings feature, frequently used print job parameters can be stored for reuse.
- **Bi-directional Real-time Status.** Bi-directional communication between the printer or multifunction printer and computer provides real-time notification on the status of jobs, paper trays and other supplies. Users stay more productive as there's no need to be in front of the device.
- **Bi-directional communication** will also auto-configure the printer driver, providing access to installable options (additional trays, finishing, etc)—no need for users to manually configure printer drivers.
- **Xerox® Global Print Driver®.** This truly universal print driver lets IT administrators install, upgrade and manage Xerox® and non-Xerox® devices from a single driver. It provides a consistent, easy-to-use interface for end-users, reducing the number of support calls and simplifying print services management.
- **Concurrent wired and wireless support.** VersaLink devices support both an Ethernet connection and a Wi-Fi® connection (via an optional wireless network adapter) at the same time. VersaLink printers and MFPs can then be discovered via Apple® AirPrint® or Mopria® Print Service, even when connected to the wired network. This also allows you to make the printer or MFP available to guest users via Wi-Fi Direct®, even when your guests are not connected to your wireless network.
- **Scan to App.** This feature provides access to all scan destinations and features in one, easy-to-find location at the touchscreen UI.
- **Xerox® ConnectKey® for DocuShare®.** Scan files directly into Xerox® DocuShare® folders from your VersaLink multifunction printer. This workflow solution automatically converts documents into intelligent, structured data with easy file naming and routing tools.
- **Earth smart printing.** Our innovative Earth Smart feature in our print drivers allows you to reduce costs while choosing the most environmentally sensitive options for your print jobs.
- **Booklet Layout.** Booklet Layout automatically scales and reorients pages of a print job to create a booklet. Print jobs can be printed onto different paper sizes, with margins adjusted and page borders added. Additionally, spacing can be adjusted to allow for folding and stapling as well as the reading order of pages within the job.

Count On It (cont'd)

INSTALLATION

With Xerox® VersaLink® devices, you're ready to go—hassle free—right out of the box, even in environments with little-to-no IT support.

- **Initial Install Wizard.** Installation is easy with the initial install wizard that provides step-by-step instructions and configuration options right from the user interface. This wizard guides users through settings from basic to advanced settings.
- **Remote Control Panel.** IT administrators and other authorized users can control the device remotely from a web page on any device, enabling faster, more convenient technical support and user training. The Remote Control Panel user experience is identical to performing tasks directly at the device.
- **Customer Replaceable Units.** We engineered our VersaLink printers and multifunction printers with a simplified design so you can stay up and running. Easily and quickly replace components, such as the imaging drum or toner cartridge.
- **Driver deployment.** Print and scan drivers can be deployed centrally, eliminating the need for IT staff to perform desk-to-desk manual installation of the driver software. In many cases, existing Xerox® drivers on your network can work with your new hardware, potentially saving the step of updating your driver software. Wizards provided within Xerox® CentreWare® Web aid in installing, troubleshooting and upgrading your driver software, freeing up your IT staff for more pressing projects. The Xerox® Global Print Driver® supports Xerox® and non-Xerox® devices on the network, eliminating the need for other print drivers and saving hours of downtime.
- **Configure once, apply fleet wide.** VersaLink device configurations can be cloned and distributed to all similar devices on your network, eliminating the need to configure and manage each device individually. Cloning can be completed using several different methods. Users can utilize the Embedded Web Server or there

are a variety of managed print services tools for customers enrolled in a managed service program.

- **Embedded Web Server.** Allows networked users to connect to their printer or multifunction printer via any standard web browser to install print drivers, monitor printer status, view the print job queue, manage settings and properties, and access troubleshooting and support resources.
- **LDAP Mapping.** LDAP servers display different results depending on how they implement mappings. You can complete simple email address searches with LDAP and Scan to Email jobs. Our full integration is the differentiator. Our LDAP Mapping integrates with the address book, User Permissions and Scan to Home. In addition, this feature automatically suggests contacts by searching the device address book and LDAP as characters are entered.
- **Xerox® CentreWare Web Software.** This free, device management solution for IT makes it easy to install, configure, manage, monitor and pull reports from networked and multifunction printers throughout an enterprise, regardless of the manufacturer.
- **A help desk at your fingertips.** Get quick, easy, step-by-step troubleshooting assistance with embedded help videos right on the user interface.
- **Xerox® Remote Print Services with install wizard.** Customers enrolling or participating in one of our metered or managed print service programs get the added benefit of Automated Supplies Replenishment (ASR). Save time with our suite of remote services, and let us manage your devices for you. This includes:
 - **Xerox® Automated Meter Readings (AMR).** Automates the process of collecting and submitting meter reads for tracking and billing of Xerox® device usage. Eliminates the need for time-consuming end-user involvement and ensures that meter reads are submitted to Xerox on time.

- **Xerox® Automatic Supplies Replenishment (ASR).** Automatically orders supplies for Xerox® output devices based on actual usage, eliminating the need to manually manage supplies inventory.
- **On-demand reset to factory defaults.** To ensure the security of your data, VersaLink devices can be fully reset back to a factory state.

INTRODUCING TOUCHSCREEN SUPERIORITY

Meet our tilttable, capacitive color touchscreen—the user interface that sets a higher standard for customization, personalization and versatility.

By presenting a familiar “mobile” experience—with support for gestural input and task-focused apps that share a common look and feel—fewer steps are needed to complete even the most complex jobs.

A highly intuitive layout guides you through every task from start to finish, with a natural hierarchy placing critical functions near the top of the screen and commonly used options front and center. Don't like where a function or app is located? Customize the layout to make it yours.

This unmatched balance of hardware technology and software capability helps everyone who interacts with our VersaLink printers and multifunction printers get more work done, faster.



View a demo of our VersaLink device touchscreen at www.xerox.com/VersaLinkUIDemo.

Count On It (cont'd)

XEROX COMPREHENSIVE SECURITY: PREVENT, DETECT, PROTECT

Xerox long ago recognized and embraced the shift in technology and evolving needs of the workplace. We provide an extensive set of security features to keep your printers and your data safe. Every part of the data chain is secured, including print, copy, scan, fax, file downloads and system software.

Prevent: Safeguarding Against Unauthorized Access

ConnectKey Technology proactively prevents intrusion. The focus of which is controlling access to and safeguarding communication to/from the device by limiting it to only those that are authorized. This is accomplished in a number of ways — whether simple user name and password or more convenient card swipe, ultimately controlling access to prevent malicious use of the device.

All possible access points are secure, from the user interface to ports accessible by walk-up users, PCs and mobile devices to cloud connections.

Detect: Constant Monitoring for Security Threats

ConnectKey Technology detects and alerts any harmful changes to the device. We protect our system firmware and BIOS, constantly monitor and prevent any unauthorized changes and stop unauthorized services from running.

Protect: Keeping Critical Data Assets Secure

Our comprehensive security measures don't stop with preventing unauthorized access to your printer and securing your information from the inside. ConnectKey Technology provides capabilities to prevent intentional or unintentional transmission of critical data to unauthorized parties.

We provide document and data protection of print jobs, scanned documents and stored data with digital signatures, password protection, and encryption. From ensuring documents aren't released until the right user is at the device to preventing scanned information from reaching beyond its intended recipient, ConnectKey Technology keeps your most critical data assets safe and secure.

Xerox also protects all your stored information, using the highest levels of encryption. You can delete any processed or stored data that is no longer required using National Institute of Standards and Technology (NIST), and U.S. Department of Defense approved data clearing and sanitization algorithms¹.

External Partnerships

No single company can effectively address every security threat, so Xerox partners with the best in the cybersecurity industry. External partnerships with Cisco and measuring our performance against international standards with certifications like Common Criteria and FIPS 140-2 ensure our devices are trusted in even the most secure environments.

¹ Applies to devices with hard disk drives only

A COMPREHENSIVE APPROACH TO SECURITY



Prevent
unauthorized access



Detect
suspicious or
malicious behavior



Protect
data and documents



**External
Partnerships**

Count On It (cont'd)

VERSALINK SECURITY FEATURES

Xerox® VersaLink® devices include the following features, technologies and solutions to ensure your data and network are kept secure.

- **Secure Print with print queue deletion.** With this feature, users are required to enter a passcode at the device to release a job or can delete jobs from their queue. That means fewer documents are unnecessarily printed and left at the device.
- **Personal and Secure Jobs.** Personal and Secure Jobs ensure sensitive or confidential documents do not pose a security risk by sitting in the output tray for anyone to pick up. Users enter a 4-10 digit passcode when submitting their print job, and then simply enter this same passcode at the front panel of the printer or MFP to print their private job that's been held.
- **Hard Disk and SSD encryption.** This feature effectively safeguards your data from unauthorized access while it's being processed, transmitted or stored in the printer or multifunction printer.
- **Protect your information.** With Immediate Image Overwrite, VersaLink printers and multifunction printers equipped with a hard disk drive (HDD) can automatically erase image data from the device after each job.
- **Secure Email with TLS 1.2.** Securely scan and send email to third-party mail service providers with Transport Layer Security (TLS). With this security feature, your VersaLink multifunction printer will keep emails safe and free from unauthorized access.
- **Simultaneous HTTP/HTTPS with Self-signed Certificates.** Support for simultaneous HTTP/HTTPS connections allows HTTP and HTTPS connections, services and functions. Communications that depend on and require HTTPS functionality will also work seamlessly without the need to first enable HTTPS and configure certificates; eliminating complicated manual setup and configuration.
- **Stay compliant with regulations.** Our VersaLink devices comply with the latest security standards, including the Federal Information Processing Standard (FIPS) 140-2, Department of Defense (DoD) Security standards and undergo the full-system Common Criteria (undergoing evaluation) certification process. Controls are available to match your security needs and conform to any standards across industries, government, finance and healthcare.
- **Password Protected PDF.** Users have the option to encrypt PDF files with a password when using the Scan to Email service on VersaLink multifunction printers. This technology provides protection outside of your firewall, securing data in an unsecure environment using industry-standard protocols such as Secure PDF.
- **Role-based permissions.** Assign different levels of access to users in environments where Administrator-level security isn't necessary.
- **Prevent attacks.** VersaLink devices give administrators the ability to set lockout limits for users logging in. For example, if the administrator sets a limit of three attempts and all three fail, that user will be locked out for a set period of time. This prevents automated dictionary-style attacks to gain access.
- **Audit Logs.** Track access and activity by document, user and function on VersaLink printers and multifunction printers. The Audit Log is disabled by default; it can be enabled and disabled in the Embedded Web Server.
- **Common Access Card Support (CAC/PIV).** This ensures secure printing using Common Access Card (CAC)/Personal Identity Verification (PIV) card technologies and attaches the print-job sender's identity certificate to the print job. At the device, the user must authenticate with the user's CAC/PIV card before releasing the job.
- **USB card-based authentication.** VersaLink devices can be upgraded with optional solutions to deliver even greater cost control capabilities. They support many USB card-based authentication technologies that enable users to log into the device using a proximity card, student ID or security card, providing a secure method of authentication, tracking usage and billing.
- **Authentication, authorization and accounting (AAA).** VersaLink devices support a robust set of features that help you control access, enforce policies, monitor usage and obtain information so you can bill for services.
- **Print User ID in the print margin.** With this feature, user information is printed in the margin of the first page to quickly help users identify which pages are theirs, as well as eliminating costly and wasteful banner pages.
- **Cisco® Identity Services Engine (ISE) Integration.** Centrally manage and deploy printer security policies. Our partnership with Cisco provides greater Xerox® print device detection capabilities, resulting in finer-grain security policy enforcement. Xerox® devices are automatically recognized and classified by Cisco ISE, permitting network access control and reduction of overhead by eliminating manual entry of printer attributes. Our profiling of printers with Cisco ISE thwarts spoofing attempts by saboteurs to gain unfettered access to sensitive systems. Xerox® print device integration with Cisco ISE provides an operationally efficient approach to meeting security policy objectives.
- **Trusted Platform Module (TPM).** The TPM is used to securely hold the product storage encryption key, which protects the device during initial boot. It also provides ongoing encryption of the device's various storage media.

Well Connected

Mobile-ready and cloud-connected. The office of the future is here today. Xerox® VersaLink® printers and multifunction printers enable the advanced connectivity mobile workforces need to collaborate, share and process the documents and information that keep your business running.

MOBILITY

VersaLink devices provide unprecedented mobile access from any device, with multiple connectivity options and no complicated setup.

Standard Mobility Solutions

- **Apple® AirPrint®.** With AirPrint, you can print emails, photos and important office documents directly from your favorite Apple devices, including iPhone®, iPad® and your Mac®. Additionally, Mac users can scan via AirPrint. With AirPrint, your iPhone, iPad or Mac automatically locates and connects to the AirPrint-enabled device over your Wi-Fi® and/or Ethernet network. For enhanced security and controllable printing, Apple AirPrint offers accounting support as well as IPP attributes, which enables more complicated finishing options and print settings, such as two-sided printing, page range, quantity and color or black-and-white.
- **Mopria® Print Service.** This allows Android™ device users to easily and wirelessly discover and print to Mopria-certified Xerox® and non-Xerox® printers or multifunction printers without installing drivers or downloading additional apps or software. As a founding member of the Mopria Alliance, Xerox continues to shape innovation in the mobile printing arena and ensures that both our current and future technologies are keeping up with the ever-evolving mobile landscape.
- **Wi-Fi Network Adapter (Wi-Fi Kit).** With this optional hardware, you can easily set up and place your VersaLink printer or multifunction printer anywhere you need it without costly additional network reconfiguration and wiring.
- **Xerox® Mobile Link App.** This free app allows you to scan, email and fax from your Android or iOS-based mobile device to VersaLink multifunction printers and send data to and print data from cloud storage. Downloaded from the Google Play™ Store or Apple App Store, Mobile Link resides on your mobile device. Once installed, easily create Mobile Link one-touch workflows between a mobile device and a VersaLink Multifunction printer. Use a manual address or allow automatic device discovery to find and pair your mobile device with a nearby Xerox® multifunction printer.
- **NFC Tap-to-Pair.** With Near Field Communications (NFC) Tap-to-Pair, users can simply tap their Android device to a VersaLink printer or multifunction printer to establish a direct connection. Once established, printing is handled using a wireless connection if the optional wireless network adapter has been installed. If the wireless network adapter is not installed, printing is handled via the Ethernet network. This feature allows for greater security and results in less waste as users are in direct proximity to the device.¹
- **Wi-Fi Direct®.** This ensures that you can print to VersaLink printers and multifunction printers from your mobile device without having to connect to a network. Adding the optional wireless network adapter enables this connection and allows for both an Ethernet connection and Wi-Fi Direct connection to be enabled at the same time.
- **Xerox® Print Service Plug-in for Android™.** This unique, full-featured plug-in for KitKat (4.4 or greater) devices streamlines mobile printing without third-party apps or additional print drivers. After downloading this free plug-in from the Google Play™ Store, you can easily print photos, Web pages and documents when your mobile device is connected to VersaLink multifunction printers using a wireless network. Robust printing options include color or black-and-white printing, number of copies, paper orientation, two-sided printing, stapling, Secure Print/ Secure Code Release and more.
- **TWAIN scanning push and pull.** This feature further simplifies network TWAIN scanning by allowing users to pull the scan back to their PC without the need for a password.



- **Xerox® Print Service Plug-in for Android™.** This unique, full-featured plug-in for KitKat (4.4 or greater) devices streamlines mobile printing without third-party apps or additional print drivers. After downloading this free plug-in from the Google Play™ Store, you can easily print photos, Web pages and documents when your mobile device is connected to VersaLink multifunction printers using a wireless network. Robust printing options include color or black-and-white printing, number of copies, paper orientation, two-sided printing, stapling, Secure Print/ Secure Code Release and more.
- **TWAIN scanning push and pull.** This feature further simplifies network TWAIN scanning by allowing users to pull the scan back to their PC without the need for a password.

¹ If the Wireless network Adapter is not present, print jobs submitted from an Android device will route via Ethernet only if the customer has configured their network appropriately.

Well Connected (cont'd)

Advanced Mobility Solutions

• **Xerox® Workplace Solutions.** Xerox® Workplace Solutions make mobile printing simple and seamless, even with complex network configurations. Users won't need IT support to get up and running — raising productivity for everyone. Whether you submit your jobs to our single queue from your desktop PC or mobile device, you can review, select job settings, print or delete them from any networked printer.

- Provides native desktop application printing with Microsoft Windows® OS devices and Google® Chromebooks™, Mac® OS, Linux® and mobile app printing for iOS, Android™ and Windows Surface™ tablet (server queue mode only)
- With a traditional pull/follow printing workflow, send jobs to a single queue for release and retrieve when ready
- Stay inside your network or use the cloud

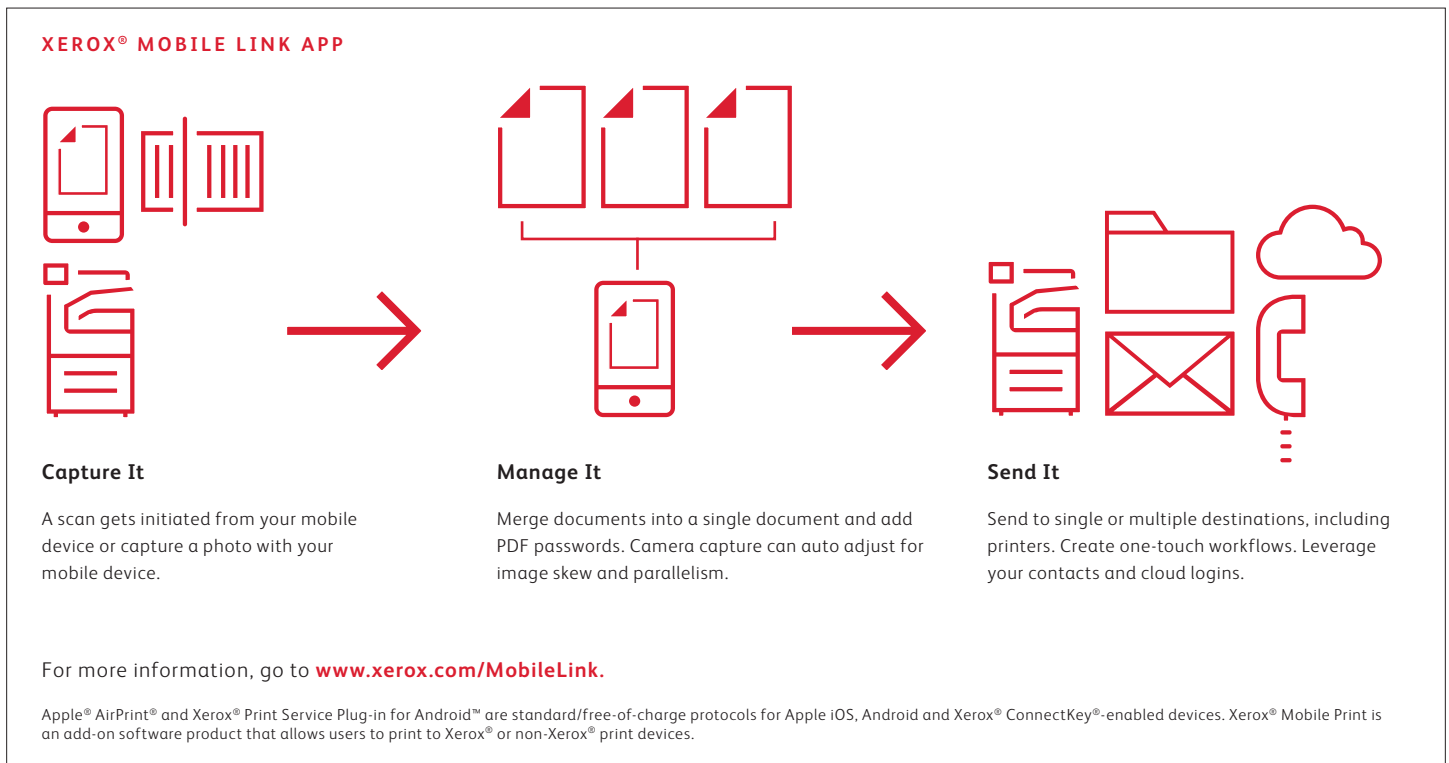
However you work, there's a Workplace Solution for you. Xerox® Workplace Suite keeps everything within your network, while Xerox® Workplace Cloud gives you the flexibility to work across multiple networks and locations.

Learn more by visiting www.xerox.com/mobility.

CLOUD

Reach new heights of mobile productivity with cloud-ready apps that keep your workforce connected from any location.

- **Support for Google Cloud Print™ 2.0.** Xerox® VersaLink printers and multifunction printers are enabled with secure cloud printing, an ideal solution for workers on the go. Securely and directly connect and register with the Google Cloud Print service and your smartphone, tablet, laptop or traditional desktop device will always be available wherever you are. No need to install and maintain print drivers or additional software.
- **Cloud connections.** VersaLink printers and multifunction printers provide access to DropBox™, Microsoft® OneDrive® and Google Drive™ online storage services so users can easily print from and scan to the locations they use every day.



Make It Yours

Time-saving apps and a personalized user experience. Be prepared to interact with VersaLink® printers and multifunction printers in a whole new way. Create customized workflows with easy-to-use apps and configure your interface to keep the functions you use most front and center.

APPS

VersaLink multifunction printers come preloaded with mobile-like apps that simplify common tasks and allow for easy customization. Download additional apps based on your business needs, or engage our partners to build new business-specific apps to reduce complicated workflows to single-touch simplicity.

- **Xerox® ConnectKey® Apps and Xerox App Gallery.** With the touch of a button, you can go to our Xerox App Gallery and download these lightweight, serverless apps to your VersaLink printer or multifunction printer to increase user productivity and shorten everyday tasks. ConnectKey Apps empower you to easily customize your workflow with apps such as @PrintByXerox, Xerox® Easy Translator Service and Xerox® Healthcare MFP¹.
- **Cloud connectors.** VersaLink multifunction printers provide easy access to apps that allow you to easily scan your documents and send them to DropBox™, Google Drive™ or Microsoft® OneDrive® without tedious setup.
- **Xerox Extensible Interface Platform®.** Our VersaLink printers and multifunction printers come equipped with an open platform that is customizable to fit your work environment and needs. This key unlocks your ability to simplify everyday tasks that make the MFP easier to use and allows the MFP to run third-party solutions that enable an even more tailored workflow.

- **Xerox® Easy Translator Service.**

This service allows customers to scan a document and receive a translated print of the document or email notification. Users can also send a digital image from a mobile device or a PC that is forwarded for translation. This is offered for both iOS and Android™ devices. For more information, visit <https://xeroxtranslates.com>.

PERSONALIZATION

Configure your VersaLink printers and multifunction printers to make the user experience personal by machine, fleet, workgroup or individual.

- **Familiar app-style user interface.** Our VersaLink printers and multifunction printers feature a user interface that behaves much like the mobile devices we're all accustomed to using. To simplify the user interface even further, a highly intuitive layout guides you through every task from start to finish, with a natural hierarchy placing critical functions near the top of the screen and commonly used options front and center.
- **Customized UI Support.** Customize and simplify each user's experience by moving and hiding icons based on user logins and creating presets for common workflows. Users can access the functions they use most with just one touch.
- **1-Touch Apps.** 1-Touch Apps simplify and automate lengthy multi-step workflows by allowing users to save common tasks and their respective job settings as an "app" that appears on the device home screen. Users simply tap their new app to accomplish their task with a single touch.
- **Unified Address Book.** The unified address book lets you seamlessly import your existing contacts and roll them out to multiple VersaLink multifunction printers.
- **Personal Favorites.** Personal Favorites allows each user to create and quickly access their favorite contacts from the unified address book. No need to browse through multiple contacts, favorites are front and center!
- **Intelligent Search.** This feature allows users to type in the first few letters of a contact's name and then the VersaLink device will suggest contacts which meet similar search criteria.
- **Jobs service.** Easily manage jobs and view their status from the Xerox® Embedded Web Server, print driver or device front panel. Our clear graphical interfaces provide for easy, intuitive interaction with the printer or multifunction printer.
- **Application defaults.** Adjust settings for specific applications, such as always printing Microsoft® PowerPoint® files 2-up and in black-and-white.
- **Maintain control.** With User Permissions, you can restrict access to print features by user, group, time of day and application. To limit color printing, you simply select a rule that makes all Microsoft® Outlook® emails automatically print in black-and-white and in duplex mode.
- **Feature Access Control.** This feature allows administrators to control costs by limiting features to certain users and makes it easier for those users to see only the services they use.

¹ Xerox® Healthcare MFP is available in the U.S. only.

Introducing Xerox® VersaLink® Printers and Multifunction Printers

COLOR LETTER/A4 DEVICES



Xerox® VersaLink® C400 Color Printer

36 ppm color 36 ppm b/w



Xerox® VersaLink® C500 Color Printer

45 ppm color 45 ppm b/w



Xerox® VersaLink® C600 Color Printer

55 ppm color 55 ppm b/w



Xerox® VersaLink® C405 Color Multifunction Printer

36 ppm color 36 ppm b/w



Xerox® VersaLink® C505 Color Multifunction Printer

45 ppm color 45 ppm b/w



Xerox® VersaLink® C605 Color Multifunction Printer

55 ppm color 55 ppm b/w

BLACK-AND-WHITE LETTER/A4 DEVICES



Xerox® VersaLink® B400 Printer

47 ppm b/w



Xerox® VersaLink® B600 Printer

58 ppm b/w



Xerox® VersaLink® B610 Printer

65 ppm b/w



Xerox® VersaLink® B405 Multifunction Printer

47 ppm b/w



Xerox® VersaLink® B605 Multifunction Printer

58 ppm b/w



Xerox® VersaLink® B615 Multifunction Printer

65 ppm b/w

COLOR TABLOID/A3 DEVICES



Xerox® VersaLink® C7020/C7025/C7030 Color Multifunction Printer

20/25/30 ppm color

20/25/30 ppm b/w



Xerox® VersaLink® C8000 Color Printer

45 ppm color 45 ppm b/w



Xerox® VersaLink® C9000 Color Printer

55 ppm color 55 ppm b/w

BLACK-AND-WHITE TABLOID/A3 DEVICE



Xerox® VersaLink® B7025/B7030/B7035 Multifunction Printer

25/30/35 ppm b/w

Specifications, Configuration Summaries and Options

XEROX® VERSALINK® B400 PRINTER AND B405 MULTIFUNCTION PRINTER

DEVICE SPECIFICATIONS		VersaLink B400	VersaLink B405
Speed ¹		Up to 47 ppm letter/Up to 45 ppm A4	
Duty Cycle ²		Up to 150,000 pages/month ²	
Processor / Memory		1.05 GHz Dual Core/2 GB	
Connectivity		Ethernet 10/100/1000 Base-T, High-speed USB 3.0, Wi-Fi 802.11n and Wi-Fi Direct with optional Wi-Fi Kit (concurrent wired and wireless connections supported), NFC Tap-to-Pair	
Controller Features		Unified Address Book (B405), Configuration Cloning, Scan Preview (B405), Xerox Extensible Interface Platform®, Xerox® App Gallery App, Xerox® Standard Accounting Tool, Online Support	
Paper Handling Paper Input	Standard	NA	Reversing Automatic Document Feeder (RADF): 60 sheets; Custom sizes: 5.5 x 5.5 in. (140 x 140 mm) to 8.5 x 14 in. (216 x 356 mm)
	Optional	Bypass Tray: Up to 150 sheets; Custom sizes: 3 x 5 in. to 8.5 x 14 in./76 x 127 mm to 216 x 356 mm	
		Tray 1: Up to 550 sheets; Custom sizes: 5.8 x 8.3 in. to 8.5 x 14 in./76 x 127 mm to 216 x 356 mm	
		3 Additional Trays: Up to 550 sheets each; Custom sizes: 5.8 x 8.3 in. to 8.5 x 14 in./140 x 210 mm to 216 x 356 mm	
Total Capacity (std. / max.)		700 sheets/2,350 sheets	
Paper Output		250 sheets	
Automatic Two-sided Output		Standard	
Print and Copy Resolution		Print: Up to 1200 x 1200 dpi (enhanced)	Print: Up to 1200 x 1200 dpi (enhanced) Copy: Up to 600 x 600 dpi
First-Page-Out Time (as fast as)		Print: As fast as 8 seconds	Print: As fast as 8 seconds Copy: As fast as 6 seconds
Page Description Languages		PCL®5e/PCL 6/PDF/XPS/TIFF/JPEG/HP-GL/Adobe® PostScript® 3™	
INTUITIVE USER EXPERIENCE			
Customize and Personalize		Walkup customization, Personalize Home Screen by User, Multiple Home Screens with Simple ID, Customize by Site and Function or Workflow with Xerox App Gallery	
Print Drivers		Job Identification, Bi-directional Status, Job Monitoring and Xerox® Global Print Driver®	
Xerox® Embedded Web Server		PC or mobile—Status Information, Responsive Design, Settings, Device Management, Cloning	
Remote Console		Remote Control Panel	
Preview		NA	Preview of Scan/Fax with Zoom, Rotate, Add Page
Print Features		Print from USB, Secure Print, Sample Set, Personal Print, Saved Job, Earth Smart Driver Settings, Job Identification, Booklet Creation, Store and Recall Driver Settings, Bi-directional Real-time Status, Scaling, Job Monitoring, Application Defaults, Two-sided Printing (as default), Skip Blank Pages, Draft Mode	
Scan		NA	Optical Character Recognition (OCR), Scan to USB/Email/Network (FTP/SMB), Scan File Formats: PDF, PDF/A, XPS, JPEG, TIFF; Convenience Features: Scan to Home, Searchable PDF, Single/Multi-Page PDF/XPS/TIFF/Password Protected PDF, Secure Scanning via SFTP
Fax ³		NA	Fax Features: Walk-up Fax (includes LAN Fax, Direct Fax, Fax Forward to Email, Server Fax)
MOBILE AND CLOUD READY			
Mobile Printing		Apple® AirPrint® ⁴ , Google Cloud Print™ Ready, Mopria® Certified, Mopria® Print Service Plug-in for Android™, Xerox® @printbyXerox App, Xerox® Print Services plug-in for Android™	
Mobility Options		Xerox® Mobile Print and Xerox® Mobile Print Cloud App, Connect via NFC/Wi-Fi Direct Printing, Xerox® Mobile Link App (B405). Visit www.xerox.com/OfficeMobileApps for available apps.	
Cloud Connectors ⁵		Print from/Scan to ⁶ Google Drive™, Microsoft® OneDrive®, Dropbox™, Microsoft Office 365®, Box®, Xerox® DocuShare® Platform and more	
BENCHMARK SECURITY			
Network Security		IPsec, HTTPS, Encrypted Email, Network Authentication, SNMPv3, SSL/TLS, Security Certificates, Pre-installed Self-signed Certificates, Cisco® Identity Services Engine (ISE) integration	
Device Access		Firmware Verification, User access and internal firewall, Port/IP/Domain Filtering, Audit Log, Access Controls, User Permissions, Smart Card Enabled (CAC/PIV.NET), Xerox® Integrated RFID Card Reader, Trusted Platform Module (TPM)	
Data Protection		Setup/Security Wizards, Job Level Encryption via HTTPS/IPPS Submission, Encrypted Hard Disk (AES 256-bit, FIPS 140-2), Common Criteria Certification (ISO 15408), Encrypted Apps with Embedded Certificate Support	
Document Security		Secure Print, Secure Fax (B405), Secure Email (B405), Password Protected PDF (B405)	
ENABLES NEXT GENERATION SERVICES			
Print Management		Xerox® Standard Accounting; Optional: Xerox® Workplace Cloud/Suite, Nuance Equitrac, Ysoft SafeQ, PaperCut and more at www.xerox.com/PrintManagement .	
Fleet / Device Management		Xerox® Device Manager, Xerox® Support Assistant App, Auto Meter Read, Managed Print Services tools, Configuration Cloning	
Sustainability		Cisco EnergyWise®, Earth Smart Printing, EPEAT-verified Print User ID on margins	
GATEWAY TO NEW POSSIBILITIES			
Cloud Services		Xerox® Easy Translator (B405), Xerox® Healthcare MFP Solution (B405 – U.S. only), CapturePoint™ (B405), many additional services available	
Xerox App Gallery		Many apps and cloud services available. Visit www.xerox.com/AppGallery for a growing selection of Xerox® apps available for adding functions to the Printer/MFP.	

¹ Declared print speed in accordance with ISO/IEC 24734. ² Maximum volume capacity expected in any one month. Not expected to be sustained on a regular basis; ³ Requires analog phone line; ⁴ Visit www.apple.com for AirPrint Certification list; ⁵ Optional download from Xerox App Gallery to the Printer — www.xerox.com/XeroxAppGallery; ⁶ Scan to available for B405.

Certifications

To view the latest list of certifications, go to www.xerox.com/OfficeCertifications.

Supplies

Standard Capacity Toner Cartridge: 5,900 pages ⁷	106R03580
High Capacity Toner Cartridge: 13,900 pages ⁷	106R03582
Extra High Capacity Toner Cartridge: 24,600 pages ⁷	106R03584
Drum Cartridge: 65,000 pages ⁸	101R00554

Options

550-sheet Feeder (B400)	497K13620
550-sheet Feeder (B405)	497K13630
Productivity Kit with 16 GB Solid State Drive Stand	097S04913
Wireless Network Adapter (Wi-Fi Kit)	497K13660
External Card Reader/RFID Kit (B400)	497K16750
Internal Card Reader/RFID Kit (B405)	497K18380
	497K18120

⁷ Average standard pages. Declared Yield in accordance with ISO/IEC 19752. Yield will vary based on image, area coverage and print mode.

⁸ Approximate pages. Declared yield will vary depending on job run length, media size/orientation and machine speed. For more information, visit <https://www.office.xerox.com/latest/SUPGL-01.PDF>.

Configurations vary by geography.

For more detailed specifications, go to www.xerox.com/VersalinkB400Specs or www.xerox.com/VersalinkB405Specs.

XEROX® VERSALINK® C400 COLOR PRINTER AND C405 COLOR MULTIFUNCTION PRINTER

DEVICE SPECIFICATIONS	VersaLink C400	VersaLink C405
Speed ¹	Up to 36 ppm color and black-and-white (Letter)/35 ppm color and black-and-white (A4)	
Duty Cycle ²	Up to 85,000 pages/month ²	
Processor / Memory	1.05 GHz Dual-Core/2 GB	
Connectivity	Ethernet 10/100/1000 Base-T, High-speed USB 3.0, Wi-Fi 802.11n and Wi-Fi Direct with optional Wi-Fi Kit (concurrent wired and wireless connections supported), NFC Tap-to-Pair	
Controller Features	Unified Address Book (C405), Configuration Cloning, Scan Preview (C405), Xerox Extensible Interface Platform®, Xerox® App Gallery App, Xerox® Standard Accounting Tool, Online Support	
Paper Handling		
Paper Input	Standard	Single-pass Duplex Automatic Document Feeder (DAF): 50 sheets; Custom Sizes: 5.5 x 5.5 in. to 8.5 x 14 in./140 x 140 mm to 216 x 356 mm Bypass Tray: 150 sheets; Custom sizes: 3 x 5 in. to 8.5 x 14 in./76 x 127 mm to 216 x 356 mm Tray 1: 550 sheets; Custom sizes: 5.8 x 8.3 in. to 8.5 x 14 in./148 x 210 mm to 216 x 356 mm
	Optional	Tray 2: 550 sheets; Custom sizes: 5.8 x 8.3 in. to 8.5 x 14 in./148 x 210 mm to 216 x 356 mm
Paper Output	250 sheets	
Automatic Two-sided Printing	Standard	
Print and Copy Resolution	Print: Up to 600 x 600 x 8 dpi	Print: Up to 600 x 600 x 8 dpi; Copy: Up to 600 x 600 dpi
First-Print-Out Time	As fast as 13 seconds color/12 seconds black-and-white	
First-Copy-Out Time	As fast as 11 seconds color/8 seconds black-and-white	
Page Description Languages	PCL®5e/PCL 6/PDF/XPS/TIFF/JPEG/HP-GL/Adobe® PostScript® 3™	
INTUITIVE USER EXPERIENCE		
Customize and Personalize	Walkup customization, Personalize Home Screen by User, Multiple Home Screens with Simple ID, Customize by Site, Function or Workflow with Xerox App Gallery	
Print Drivers	Job Identification, Bi-directional Status, Job Monitoring and Xerox® Global Print Driver®	
Xerox® Embedded Web Server	PC or mobile — Status Information, Responsive Design, Settings, Device Management, Cloning	
Remote Console	Remote Control Panel	
Preview	NA	Preview of Scan/Fax with Zoom, Rotate, Add Page
Print Features	Print from USB, Secure Print, Sample Set, Personal Print, Saved Job, Earth Smart Driver Settings, Job Identification, Booklet Creation, Store and Recall Driver Settings, Bi-directional Real-time Status, Scaling, Job Monitoring, Application Defaults, Two-sided Printing (as default), Skip Blank Pages, Draft Mode	
Scan and Fax ³	Scan to USB/Email/Network (FTP/SMB), Scan File Formats: PDF, PDF/A, XPS, JPEG, TIFF; Convenience Features: Scan to Home, Searchable PDF, Single/Multi-Page PDF/XPS/TIFF/Password Protected PDF, Fax Features: Walk-up Fax includes LAN Fax, Direct Fax, Fax Forward to Email, Server Fax), Unified Address Book, Optical Character Recognition (OCR), Secure Scanning via SFTP	
MOBILE AND CLOUD READY		
Mobile Printing	Apple® AirPrint® ⁴ , Google Cloud Print™ Ready, Mopria® Certified, Mopria® Print Service Plug-in for Android™, Xerox® @printbyXerox App, Xerox® Print Services plug-in for Android™	
Mobility Options	Xerox® Mobile Print Solution and Xerox® Mobile Print Cloud App, Connect via NFC/Wi-Fi Direct Printing, Xerox® Mobile Link App (C405). Visit www.xerox.com/OfficeMobileApps for available apps.	
Cloud Connectors ⁵	Print from/Scan to ⁶ Google Drive™, Microsoft® OneDrive®, Dropbox™, Microsoft Office 365®, Box®, Xerox® DocuShare® Platform and more	
BENCHMARK SECURITY		
Network Security	IPsec, HTTPS, encrypted email. Network Authentication, SNMPv3, SSL/TLS, Security Certificates, Pre-installed Self-signed Certificates, Cisco® Identity Services Engine (ISE) integration	
Device Access	Firmware Verification, User access and internal firewall, Port/IP/Domain Filtering, Audit Log, Access Controls, User Permissions, Smart Card Enabled (CAC/PIV.NET), Xerox® Integrated RFID Card Reader, Trusted Platform Module (TPM)	
Data Protection	Setup/Security Wizards, Job Level Encryption via HTTPS/IPPS submission, Encrypted hard disk (AES 256-bit, FIPS 140-2) and image overwrite, Common Criteria Certification (ISO 15408), Encrypted Apps with Embedded Certificate Support	
Document Security	Secure Print, Secure Fax (C405), Secure Email (C405), Password Protected PDF (C405)	
ENABLES NEXT GENERATION SERVICES		
Print Management	Xerox® Standard Accounting; Optional: Xerox® Workplace Cloud/Suite, Nuance Equitrac, Ysoft SafeQ, PaperCut and more at www.xerox.com/PrintManagement .	
Fleet / Device Management	Xerox® Device Manager, Xerox® Support Assistant App, Auto Meter Read, Managed Print Services tools, Configuration Cloning	
Sustainability	Cisco EnergyWise®, Earth Smart Printing, EPEAT-verified, Print User ID on margins	
GATEWAY TO NEW POSSIBILITIES		
Cloud Services	Xerox® Easy Translator (C405), Xerox® Healthcare MFP Solution (C405 – U.S. only), CapturePoint™ (C405), many additional services available	
Xerox App Gallery	Many apps and cloud services available. Visit www.xerox.com/AppGallery for a growing selection of Xerox® apps available for adding functions to the Printer/MFP.	

¹ Declared print speed in accordance with ISO/IEC 24734. ² Maximum volume capacity expected in any one month. Not expected to be sustained on a regular basis; ³ Available for C405 only; fax requires analog phone line; ⁴ Visit www.apple.com for AirPrint Certification list; ⁵ Optional download from Xerox App Gallery to the Printer — www.xerox.com/XeroxAppGallery; ⁶ Scan to available for C405.

Certifications

To view the latest list of certifications, go to www.xerox.com/OfficeCertifications.

Supplies

Extra High Capacity Print Cartridges:

Black: 10,500 std. pages ⁷	106R03524
Cyan: 8,000 std. pages ⁷	106R03526
Magenta: 8,000 std. pages ⁷	106R03527
Yellow: 8,000 std. pages ⁷	106R03525

High Capacity Print Cartridges:

Black: 5,000 std. pages ⁷	106R03512
Cyan: 4,800 std. pages ⁷	106R03514
Magenta: 4,800 std. pages ⁷	106R03515
Yellow: 4,800 std. pages ⁷	106R03513

Standard Capacity Print Cartridges:

Black: 2,500 std. pages ⁷	106R03500
Cyan: 2,500 std. pages ⁷	106R03502
Magenta: 2,500 std. pages ⁷	106R03503
Yellow: 2,500 std. pages ⁷	106R03501

Routine Maintenance Items:

Imaging Unit (includes 4 imaging units): 60,000 std. pages each ⁸	108R01121
Waste Cartridge: 30,000 std. pages ⁸	108R01124

Options

550-sheet Feeder	097S04400
Productivity Kit with 320 GB HDD	097S04914
Stand	497K13660
Wireless Network Adapter (Wi-Fi Kit)	497K16750
External Card Reader/RFID Kit (C400)	497K18380
Internal Card Reader/RFID Kit (C405)	497K18120

⁷ Average standard pages. Declared Yield in accordance with ISO/IEC 19798. Yield will vary based on image, area coverage and print mode.

⁸ Approximate pages. Declared yield will vary depending on job run length and media size/orientation and machine speed. For more information, visit <https://www.office.xerox.com/latest/SUPGL-01.PDF>.

For more detailed specifications, go to www.xerox.com/VersalinkC400Specs or www.xerox.com/VersalinkC405Specs.

XEROX® VERSALINK® C500 COLOR PRINTER AND C505 COLOR MULTIFUNCTION PRINTER

DEVICE SPECIFICATIONS		VersaLink C500	VersaLink C505
Speed ¹		Up to 45 ppm letter/Up to 43 ppm A4	
Duty Cycle ²		Up to 120,000 pages/month ²	
Processor / Memory / Hard Drive		1.05 GHz/2 GB/ optional 320 GB HDD	
Connectivity		Ethernet 10/100/1000 Base-T, High-speed USB 3.0, Wi-Fi 802.11n and Wi-Fi Direct with optional Wi-Fi Kit (concurrent wired and wireless connections supported), NFC Tap-to-Pair	
Controller Features		Unified Address Book (Versalink C505), Configuration Cloning, Scan Preview (Versalink C505), Xerox Extensible Interface Platform®, Xerox® App Gallery App, Xerox® Standard Accounting Tool, Online Support	
Paper Handling Paper Input	Standard	NA	Single-Pass Duplex Automatic Document Feeder (DADF): 100 sheets; Custom sizes: 5.5 x 5.5 in. to 8.5 x 14 in./140 x 140 mm to 216 x 356 mm
	Optional	Bypass Tray: Up to 150 sheets; Custom sizes: 3 x 5 in. to 8.5 x 14 in./76 x 127 mm to 216 x 356 mm Tray 1: Up to 550 sheets; Custom sizes: 3 x 7.5 in. to 8.5 x 14 in./76 x 190 mm to 216 x 356 mm Up to 4 Additional Trays: Up to 550 sheets; Custom sizes: 3 x 7.5 in. to 8.5 x 14 in./76 x 190 mm to 216 x 356 mm High Capacity Feeder: Up to 2,000 sheets; 8.5 x 11 in. to 8.27 x 11.69 in./216 x 297 mm	
Paper Output	Standard	500 sheets	400 sheets
Automatic Two-sided Output		Standard	
Copy and Print	Resolution	Print: Up to 1200 x 2400 dpi	Print: Up to 1200 x 2400 dpi; Copy: Up to 600 x 600 dpi
First-Page-Out Time (as fast as)		Print: As fast as 10 seconds color/8.5 seconds black and white	Print: As fast as 9 seconds color/9 seconds black and white Copy: As fast as 7 seconds color/5 seconds black and white
Page Description Languages		PCL® 5e/PCL 6/PDF/XPS/TIFF/JPEG/HP-GL/Adobe® PostScript® 3™	
INTUITIVE USER EXPERIENCE			
Customize and Personalise		Walkup customization, Personalise Home Screen by User, Multiple Home Screens with Xerox® Simple ID, Customize by Site, Function or Workflow with Xerox App Gallery	
Print Drivers		Job Identification, Bidirectional Status, Job Monitoring and Xerox® Global Print Driver®	
Xerox® Embedded Web Server		PC or mobile – Status Information, Responsive Design, Settings, Device Management, Cloning	
Remote Console		Remote Control Panel	
Preview		NA	Preview of Scan/Fax with Zoom, Rotate, Add Page
Print Features		Print from USB, Secure Print, Sample Set, Personal Print, Saved Job, Earth Smart Driver Settings, Job Identification, Booklet Creation, Store and Recall Driver Settings, Bidirectional Real-time Status, Scaling, Job Monitoring, Application Defaults, Two-sided Printing (as default), Skip Blank Pages, Draft Mode	
Scan		NA	Optical Character Recognition (OCR), Scan to USB/Email/Network (FTP/SMB), Scan File Formats: PDF, PDF/A, XPS, JPEG, TIFF; Convenience Features: Scan to Home, Searchable PDF, Single/Multi-Page PDF/XPS/TIFF/Password Protected PDF
Fax ³		NA	Fax Features (Versalink C505/X only): Walk-up Fax (includes LAN Fax, Direct Fax, Fax Forward to Email, Server Fax)
MOBILE AND CLOUD READY			
Mobile Printing		Apple® AirPrint® ⁴ , Google Cloud Print™ Ready, Mopria® Certified, Mopria® Print Service Plug-in for Android™, Xerox® @printbyXerox App, Xerox® Print Services plug-in for Android™	
Mobility Options		Xerox® Mobile Print Solution and Xerox® Mobile Print Cloud App Connect via NFC/Wi-Fi Direct Printing, Xerox® Mobile Link App (C505). Visit www.xerox.com/OfficeMobileApps for available apps.	
Cloud Connectors ⁵		Print from/Scan to Google Drive™, Microsoft® OneDrive®, Dropbox™, Microsoft Office 365®, Box®, Xerox® DocuShare® Platform and more	
BENCHMARK SECURITY			
Network Security		IPsec, HTTPS, encrypted email. Network Authentication, SNMPv3, SSL/TLS, Security Certificates, Pre-installed Self-signed Certificates, Cisco® Identity Services Engine (ISE) integration	
Device Access		Firmware Verification, User access and internal firewall, Port/IP/Domain Filtering, Audit Log, Access Controls, User Permissions, Smart Card Enabled (CAC/PIV.NET), Xerox® Integrated RFID Card Reader, Trusted Platform Module (TPM)	
Data Protection		Setup/Security Wizards, Job Level Encryption via HTTPS/IPPS submission, Encrypted hard disk (AES 256-bit, FIPS 140-2) and image overwrite, Common Criteria Certification (ISO 15408), Encrypted Apps with Embedded Certificate Support	
Document Security		Secure Print, Secure Fax (C505/X), Secure Email (C505), Password Protected PDF (C505)	
ENABLES NEXT GENERATION SERVICES			
Print Management		Xerox® Standard Accounting; Optional: Xerox® Workplace Cloud/Suite, Nuance Equitrac, Ysoft SafeQ, PaperCut and more at www.xerox.com/PrintManagement .	
Fleet / Device Management		Xerox® Device Manager, Xerox® Support Assistant App, Auto Meter Read, Managed Print Services tools, Configuration Cloning	
Sustainability		Cisco EnergyWise®, Earth Smart Printing, EPEAT-verified, Print User ID on margins	
GATEWAY TO NEW POSSIBILITIES			
Cloud Services		Xerox® Easy Translator (Versalink C505), CapturePoint™ (Versalink C505), many additional services available	

¹ Declared print speed in accordance with ISO/IEC 24734. ² Maximum volume capacity expected in any one month. Not expected to be sustained on a regular basis. ³ Requires analogue phone line;

⁴ Visit www.apple.com for AirPrint Certification list; ⁵ Optional download from Xerox App Gallery to the Printer — www.xerox.com/XeroxAppGallery ⁶ Scan to available for C505.

Certifications

To view the latest list of certifications, go to www.xerox.com/OfficeCertifications.

Supplies

Standard Capacity Toner Cartridges:

Black: 5,000 pages ⁷	106R03880
Cyan: 2,400 pages ⁷	106R03877
Magenta: 2,400 pages ⁷	106R03878
Yellow: 2,400 pages ⁷	106R03879

High Capacity Toner Cartridges:

Black: 12,100 pages ⁷	106R03887
Cyan: 5,200 pages ⁷	106R03881
Magenta: 5,200 pages ⁷	106R03882
Yellow: 5,200 pages ⁷	106R03883

Extra High Capacity Toner Cartridges:

Cyan: 9,000 pages ⁷	106R03884
Magenta: 9,000 pages ⁷	106R03885
Yellow: 9,000 pages ⁷	106R03886
Cyan Drum Cartridge: 40,000 pages ⁸	108R01481
Magenta Drum Cartridge: 40,000 pages ⁸	108R01482
Yellow Drum Cartridge: 40,000 pages ⁸	108R01483
Black Drum Cartridge: 40,000 pages ⁸	108R01484
Waste Cartridge: 30,000 pages ⁸	108R01416

Options

550-sheet Feeder	097504949
2,000-sheet High Capacity Feeder (includes Caster Base)	097504948
Cabinet (includes stabilizers)	097504994

Caster Base	097504954
Productivity Kit with 320 GB HDD	497K18360
Wireless Network Adapter (Wi-Fi Kit)	497K16750

⁷ Average standard pages. Declared Yield in accordance with ISO/IEC 19798. Yield will vary based on image, area coverage and print mode.

⁸ Approximate pages. Declared yield will vary depending on job run length, media size/orientation and machine speed. For more information, visit <https://www.office.xerox.com/Latest/SUPGL-01.PDF>.

Configurations vary by geography.

For more detailed specifications, go to www.xerox.com/VersaLinkC500Specs or www.xerox.com/VersaLinkC505Specs.

XEROX® VERSALINK® B600 PRINTER AND B605 MULTIFUNCTION PRINTER

DEVICE SPECIFICATIONS	VersaLink B600 Printer	VersaLink B605 Multifunction Printer
Speed ¹	Up to 58 ppm letter/Up to 55 ppm A4	
Duty Cycle ²	Up to 300,000 pages/month ²	
Hard Drive / Processor / Memory	1.05 GHz ARM Dual Core/2 GB/Optional 320 GB HDD	1.05 GHz ARM Dual Core/2 GB/320 GB HDD
Connectivity	Ethernet 10/100/1000 Base-T, High-speed USB 3.0, Wi-Fi 802.11n and Wi-Fi Direct with optional Wi-Fi Kit (concurrent wired and wireless connections supported), NFC Tap-to-Pair	
Controller Features	Unified Address Book (B605), Configuration Cloning, Scan Preview (B605), Xerox Extensible Interface Platform®, Xerox® App Gallery App, Xerox® Standard Accounting Tool, Online Support	
Paper Handling		Single-Pass Duplex Automatic Document Feeder (DADF): 100 sheets; Custom sizes: 5.5 x 5.5 in. to 8.5 x 14 in./140 x 140 mm to 216 x 356 mm
Paper Input	Standard NA	
	Optional Bypass Tray: Up to 150 sheets; Custom sizes: 3 x 5 in. to 8.5 x 14 in./76 x 127 mm to 216 x 356 mm Tray 1: Up to 550 sheets; Custom sizes: 3 x 7.5 in. to 8.5 x 14 in./76 x 190 mm to 216 x 356 mm	
	Optional Up to 4 Additional Trays: Up to 550 sheets each; Custom sizes: 3 x 7.5 in. to 8.5 x 14 in./76 x 190 mm to 216 x 356 mm	
Paper Output	Standard 500 sheets	High Capacity Feeder: Up to 2,000 sheets; Standard sizes: 8.5 x 11 in./A4 400 sheets without finishing options; 500 sheets with finishing options
	Optional Finisher: 500-sheet tray, 50-sheet stapling Mailbox: Four 100-sheet bins	Finisher (Requires B605/XL): 500-sheet tray, 50-sheet stapling Mailbox (Requires B605/XL): Four 100-sheet bins
Automatic Two-sided Output	Standard	
Copy and Print Resolution	Print: Up to 1200 x 1200 dpi	Print: Up to 1200 x 1200 dpi; Copy: Up to 600 x 600 dpi
First-Page-Out Time	Print: As fast as 6.3 seconds	Print: As fast as 7.5 seconds; Copy: As fast as 5.8 seconds from the Platen
Page Description Languages	PCL® 5e/PCL 6/PDF/XPS/TIFF/JPEG/HP-GL/Adobe® PostScript® 3™	
INTUITIVE USER EXPERIENCE		
Customize and Personalize	Walkup customization, Personalize Home Screen by User, Multiple Home Screens with Simple ID, Customize by Site and Function or Workflow with Xerox® App Gallery Apps	
Print Drivers	Job Identification, Bi-directional Status, Job Monitoring and Xerox® Global Print Driver®	
Xerox® Embedded Web Server	PC or mobile — Status Information, Responsive Design, Settings, Device Management, Cloning	
Remote Console	Remote Control Panel	
Preview	NA	Preview of Scan/Fax with Zoom, Rotate, Add Page
Print Features	Print from USB, Secure Print, Sample Set, Personal Print, Saved Job, Earth Smart Driver Settings, Job Identification, Booklet Creation, Store and Recall Driver Settings, Bi-directional Real-time Status, Scaling, Job Monitoring, Application Defaults, Two-sided Printing (as default), Skip Blank Pages, Draft Mode	
Scan	NA	Optical Character Recognition (OCR), Scan to USB/Email/Network (FTP/SMB), Scan File Formats: PDF, PDF/A, XPS, JPEG, TIFF; Convenience Features: Scan to Home, Searchable PDF, Single/Multi-Page PDF/XPS/TIFF/Password Protected PDF, Secure Scanning via SFTP
Fax ³	NA	Fax Features: Walk-up Fax (includes LAN Fax, Direct Fax, Fax Forward to Email, Server Fax)
MOBILE AND CLOUD READY		
Mobile Printing	Apple® AirPrint®, Google Cloud Print™ Ready, Mopria® Certified, Mopria® Print Service Plug-in for Android™, Xerox® @printbyXerox App, Xerox® Print Services plug-in for Android™	
Mobility Options	Xerox® Mobile Print Solution and Xerox® Mobile Print Cloud App, Connect via NFC/Wi-Fi Direct Printing, Xerox® Mobile Link App (B605). Visit www.xerox.com/OfficeMobileApps for available apps.	
Cloud Connectors ⁵	Print from/Scan to ⁶ Google Drive™, Microsoft® OneDrive®, Dropbox™, Microsoft Office 365®, Box®, Xerox® DocuShare® Platform and more	
BENCHMARK SECURITY		
Network Security	IPsec, HTTPS, encrypted email, Network Authentication, SNMPv3, SSL/TLS, Security Certificates, Pre-installed Self-signed Certificates, Cisco® Identity Services Engine (ISE) integration	
Device Access	Firmware Verification, User access and internal firewall, Port/IP/Domain Filtering, Audit Log, Access Controls, User Permissions, Smart Card Enabled (CAC/PIV.NET), Xerox® Integrated RFID Card Reader, Trusted Platform Module (TPM)	
Data Protection	Setup/Security Wizards, Job Level Encryption via HTTPS/IPPS submission, Encrypted hard disk (AES 256-bit, FIPS 140-2) and image overwrite, Common Criteria Certification (ISO 15408), Encrypted Apps with Embedded Certificate Support	
Document Security	Secure Print, Secure Fax (B605), Secure Email (B605), Password Protected PDF (B605)	
ENABLES NEXT GENERATION SERVICES		
Print Management	Xerox® Standard Accounting; Optional: Xerox® Workplace Cloud/Suite, Nuance Equitrac, Ysoft SafeQ, PaperCut and more at www.xerox.com/PrintManagement .	
Fleet / Device Management	Xerox® Device Manager, Xerox® Support Assistant App, Auto Meter Read, Managed Print Services tools, Configuration Cloning	
Sustainability	Cisco EnergyWise®, Earth Smart Printing, EPEAT-verified, Print User ID on margins	
GATEWAY TO NEW POSSIBILITIES		
Cloud Services	Xerox® Easy Translator (B605), Xerox® Healthcare MFP Solution (B605 – U.S. only), CapturePoint™ (B605), many additional services available	
Xerox App Gallery	Many apps and cloud services available. Visit www.xerox.com/AppGallery for a growing selection of Xerox® apps available for adding functions.	

¹ Declared print speed in accordance with ISO/IEC 24734. ² Maximum volume capacity expected in any one month. Not expected to be sustained on a regular basis; ³ Requires analog phone line; ⁴ Visit www.apple.com for AirPrint Certification list; ⁵ Optional download from Xerox App Gallery to the Printer — www.xerox.com/XeroxAppGallery; ⁶ Scan to available for B605.

Certifications

To view the latest list of certifications, go to www.xerox.com/OfficeCertifications.

Supplies

Standard Capacity Toner Cartridge:	
Black: 10,300 pages ⁷	106R03940
High Capacity Toner Cartridge:	
Black: 25,900 pages ⁷	106R03942
Extra High Capacity Toner Cartridge:	
Black: 46,700 pages ⁷	106R03944
Drum Cartridge: 60,000 pages ⁸	101R00582

Options

550-sheet Feeder	097S04949
2,000-sheet High Capacity Feeder (includes Caster Base)	097S04948
Cabinet (includes stabilizers)	097S04994
Caster Base	097S04954
Finisher (500 sheets, 50-sheet stapler)	097S04952
4-Bin Mailbox (100 sheets per bin)	097S04953
Wireless Network Adapter (Wi-Fi Kit)	497K16750
Productivity Kit with 320 GB HDD	497K18360
RFID Card Reader Kit	497K18380

⁷ Average standard pages. Declared Yield in accordance with ISO/IEC 19752. Yield will vary based on image, area coverage and print mode.

⁸ Approximate pages. Declared yield will vary depending on job run length and media size/orientation and machine speed. For more information, visit <https://www.office.xerox.com/latest/SUPGL-01.PDF>.

Configurations vary by geography.

For more detailed specifications, go to www.xerox.com/VersaLinkB600Specs or www.xerox.com/VersaLinkB605Specs.

XEROX® VERSALINK® B610 PRINTER

DEVICE SPECIFICATIONS	VersaLink B610 Printer
Speed ¹	Up to 65 ppm letter/Up to 63 ppm A4
Duty Cycle ²	Up to 300,000 pages/month
Hard Drive / Processor / Memory	1.05 GHz ARM Dual Core/2 GB/Optional 320 GB HDD
Connectivity	Ethernet 10/100/1000 Base-T, High-speed USB 3.0, Wi-Fi 802.11n and Wi-Fi Direct with optional Wi-Fi Kit (concurrent wired and wireless connections supported), NFC Tap-to-Pair
Controller Features	Configuration Cloning, Xerox Extensible Interface Platform®, Xerox® App Gallery App, Xerox® Standard Accounting Tool, Online Support
Paper Handling	Bypass Tray: Up to 150 sheets; Custom sizes: 3 x 5 in. to 8.5 x 14 in./76 x 127 mm to 216 x 356 mm
Paper Input	Tray 1: Up to 550 sheets; Custom sizes: 3 x 7.5 in. to 8.5 x 14 in./76 x 190 mm to 216 x 356 mm
	Optional Up to 4 Additional Trays: Up to 550 sheets each; Custom sizes: 3 x 7.5 in. to 8.5 x 14 in. / 76 x 190 mm to 216 x 356 mm
	High Capacity Feeder: Up to 2,000 sheets; Standard sizes: 8.5 x 11 in./A4
Paper Output	Standard 500 sheets
	Optional Finisher: 500-sheet tray, 50-sheet stapling
	Mailbox: Four 100-sheet bins
Automatic Two-sided Output	Standard
Copy and Print Resolution	Up to 1200 x 1200 dpi
First-Page-Out Time	As fast as 7.1 seconds
Page Description Languages	PCL® 5e/PCL 6/PDF/XPS/TIFF/JPEG/HP-GL/Adobe® PostScript® 3™

INTUITIVE USER EXPERIENCE

Customize and Personalize	Walkup customization, Personalize Home Screen by User, Multiple Home Screens with Simple ID, Customize by Site and Function or Workflow with Xerox App Gallery
Print Drivers	Job Identification, Bi-directional Status, Job Monitoring and Xerox® Global Print Driver®
Xerox® Embedded Web Server	PC or mobile — Status Information, Responsive Design, Settings, Device Management, Cloning
Remote Console	Remote Control Panel
Print Features	Print from USB, Secure Print, Sample Set, Personal Print, Saved Job, Earth Smart Driver Settings, Job Identification, Booklet Creation, Store and Recall Driver Settings, Bi-directional Real-time Status, Scaling, Job Monitoring, Application Defaults, Two-sided Printing (as default), Skip Blank Pages, Draft Mode

MOBILE AND CLOUD READY

Mobile Printing	Apple® AirPrint® ³ , Google Cloud Print™ Ready, Mopria® Certified, Mopria® Print Service Plug-in for Android™, Xerox® @printbyXerox App, Xerox® Print Services plug-in for Android™
Mobility Options	Xerox® Mobile Print Solution and Xerox® Mobile Print Cloud App, Connect via NFC/Wi-Fi Direct Printing. Visit www.xerox.com/OfficeMobileApps for available apps.
Cloud Connectors ⁴	Print from Google Drive™, Microsoft® OneDrive®, Dropbox™, Microsoft Office 365®, Box®, Xerox® DocuShare® Platform and more

BENCHMARK SECURITY

Network Security	IPsec, HTTPS, encrypted email, Network Authentication, SNMPv3, SSL/TLS, Security Certificates, Pre-installed Self-signed Certificates, Cisco® Identity Services Engine (ISE) integration
Device Access	Firmware Verification, User access and internal firewall, Port/IP/Domain Filtering, Audit Log, Access Controls, User Permissions, Smart Card Enabled (CAC/PIV/.NET), Xerox® Integrated RFID Card Reader, Trusted Platform Module (TPM)
Data Protection	Setup / Security Wizards, Job Level Encryption via HTTPS/IPPS submission, Encrypted hard disk (AES 256-bit, FIPS 140-2) and image overwrite, Encrypted Apps with Embedded Certificate Support
Document Security	Secure Print

ENABLES NEXT GENERATION SERVICES

Print Management	Xerox® Standard Accounting; Optional: Xerox® Workplace Cloud/Suite, Nuance Equitrac, Ysoft SafeQ, PaperCut and more at www.xerox.com/PrintManagement .
Fleet / Device Management	Xerox® Device Manager, Xerox® Support Assistant App, Auto Meter Read, Managed Print Services tools, Configuration Cloning
Sustainability	Cisco EnergyWise®, Earth Smart Printing, EPEAT-verified, Print User ID on margins

GATEWAY TO NEW POSSIBILITIES

Xerox App Gallery	Many apps and cloud services available. Visit www.xerox.com/AppGallery for a growing selection of Xerox® apps available for adding functions.
-------------------	---

¹ Declared print speed in accordance with ISO/IEC 24734. ² Maximum volume capacity expected in any one month. Not expected to be sustained on a regular basis;

³ Visit www.apple.com for AirPrint Certification list ⁴ Optional download from Xerox App Gallery to the Printer — www.xerox.com/XeroxAppGallery

Certifications

To view the latest list of certifications, go to www.xerox.com/OfficeCertifications.

Supplies

Standard Capacity Toner Cartridge:	
Black: 10,300 pages ⁵	106R03940
High Capacity Toner Cartridge:	
Black: 25,900 pages ⁵	106R03942
Extra High Capacity Toner Cartridge:	
Black: 46,700 pages ⁵	106R03944
Drum Cartridge: 60,000 pages ⁶	101R00582

Options

550-sheet Feeder	097S04949
2,000-sheet High Capacity Feeder (includes Caster Base)	097S04948
Cabinet (includes stabilizers)	097S04994
Caster Base	097S04954
Finisher (500 sheets, 50-sheet stapler)	097S04952
4-Bin Mailbox (100 sheets per bin)	097S04953
Wireless Network Adapter (Wi-Fi Kit)	497K16750
Productivity Kit with 320 GB HDD	497K18360
RFID Card Reader Kit	497K18380

⁵ Average standard pages. Declared Yield in accordance with ISO/IEC 19752. Yield will vary based on image, area coverage and print mode.

⁶ Approximate pages. Declared yield will vary depending on job run length and media size/orientation and machine speed. For more information, visit <https://www.office.xerox.com/latest/SUPGL-01.PDF>.

Configurations vary by geography.

For more detailed specifications, go to www.xerox.com/VersaLinkB610Specs.

XEROX® VERSALINK® B615 MULTIFUNCTION PRINTER

DEVICE SPECIFICATIONS		VersaLink B615 Multifunction Printer
Speed ¹		Up to 65 ppm letter/Up to 63 ppm A4
Duty Cycle ²		Up to 275,000 pages/month ²
Processor / Memory / Hard Disk Drive		1.05 GHz ARM Dual Core/2 GB/320 GB HDD
Connectivity		Ethernet 10/100/1000 Base-T, High-speed USB 3.0, Wi-Fi 802.11n and Wi-Fi Direct with optional Wi-Fi Kit (concurrent wired and wireless connections supported), NFC Tap-to-Pair
Controller Features		Unified Address Book, Configuration Cloning, Scan Preview, Xerox Extensible Interface Platform®, Xerox® App Gallery App, Xerox® Standard Accounting Tool, Online Support
Paper Handling Paper Input	Standard	Single-Pass Duplex Automatic Document Feeder (DADF): 100 sheets; Custom sizes: 5.5 x 5.5 in. to 8.5 x 14 in./140 x 140 mm to 216 x 356 mm Bypass Tray: Up to 150 sheets; Custom sizes: 3 x 5 in. to 8.5 x 14 in./76 x 127 mm to 216 x 356 mm Tray 1: Up to 550 sheets; Custom sizes: 3 x 7.5 in. to 8.5 x 14 in./76 x 190 mm to 216 x 356 mm
	Optional	Up to 4 Additional Trays: Up to 550 sheets each; Custom sizes: 3 x 7.5 in. to 8.5 x 14 in./76 x 190 mm to 216 x 356 mm High Capacity Feeder: Up to 2,000 sheets; Standard sizes: 8.5 x 11 in./A4
Paper Output		Finisher (Requires B615/XL): 500-sheet tray, 50-sheet stapling; Mailbox (Requires B615/XL): Four 100-sheet bins
Automatic Two-sided Output		Standard
Copy and Print Resolution		Print: Up to 1200 x 1200 dpi; Copy: Up to 600 x 600 dpi
First-Page-Out Time		Print: As fast as 6.6 seconds; Copy: As fast as 5.4 seconds from the Platen
Page Description Languages		PCL® 5e/PCL 6/PDF/XPS/TIFF/JPEG/HP-GL/Adobe® PostScript® 3™
INTUITIVE USER EXPERIENCE		
Customize and Personalize		Walkup customization, Personalize Home Screen by User, Multiple Home Screens with Simple ID, Customize by Site, Function or Workflow with Xerox App Gallery
Print Drivers		Job Identification, Bi-directional Status, Job Monitoring and Xerox® Global Print Driver®
Xerox® Embedded Web Server		PC or mobile—Status Information, Responsive Design, Settings, Device Management, Cloning
Remote Console		Remote Control Panel
Preview		Preview of Scan/Fax with Zoom, Rotate, Add Page
Print Features		Print from USB, Secure Print, Sample Set, Personal Print, Saved Job, Earth Smart Driver Settings, Job Identification, Booklet Creation, Store and Recall Driver Settings, Bi-directional Real-time Status, Scaling, Job Monitoring, Application Defaults, Two-sided Printing (as default), Skip Blank Pages, Draft Mode
Scan		Optical Character Recognition (OCR), Scan to USB/Email/Network (FTP/SMB), Scan File Formats: PDF, PDF/A, XPS, JPEG, TIFF; Convenience Features: Scan to Home, Searchable PDF, Single/Multi-Page PDF/XPS/TIFF/Password Protected PDF, Secure Scanning via SFTP
Fax ³		Fax Features: Walk-up Fax (includes LAN Fax, Direct Fax, Fax Forward to Email, Server Fax)
MOBILE AND CLOUD READY		
Mobile Printing		Apple® AirPrint® ⁴ , Google Cloud Print™ Ready, Mopria® Certified, Mopria® Print Service Plug-in for Android™, Xerox®@printbyXerox App, Xerox® Print Services plug-in for Android™
Mobility Options		Xerox® Mobile Print and Xerox® Mobile Print via HTTP/HTTPS submission, Trusted Platform Module (TPM)
Cloud Connectors ⁵		Print from/Scan to Google Drive™, Microsoft® OneDrive®, Dropbox™, Microsoft Office 365®, Box®, Xerox® DocuShare® Platform and more
BENCHMARK SECURITY		
Network Security		IPsec, HTTPS, encrypted email, Network Authentication, SNMPv3, SSL/TLS, Security Certificates, Pre-installed Self-signed Certificates, Cisco® Identity Services Engine (ISE) integration
Device Access		Firmware Verification, User access and internal firewall, Port/IP/Domain Filtering, Audit Log, Access Controls, User Permissions, Smart Card Enabled (CAC/PIV.NET), Xerox® Integrated RFID Card Reader, Trusted Platform Module (TPM)
Data Protection		Setup/Security Wizards, Job Level Encryption via HTTPS/IPPS submission, Encrypted hard disk (AES 256-bit, FIPS 140-2) and image overwrite, Common Criteria Certification (ISO 15408), Encrypted Apps with Embedded Certificate Support
Document Security		Secure Print, Secure Fax, Secure Email, Password Protected PDF
ENABLES NEXT GENERATION SERVICES		
Print Management		Xerox® Standard Accounting; Optional: Xerox® Workplace Cloud/Suite, Nuance Equitrac, Ysoft SafeQ, PaperCut and more at www.xerox.com/PrintManagement .
Fleet / Device Management		Xerox® Device Manager, Xerox® Support Assistant App, Auto Meter Read, Managed Print Services tools, Configuration Cloning
Sustainability		Cisco EnergyWise®, Earth Smart Printing, EPEAT-verified, Print User ID on margins
GATEWAY TO NEW POSSIBILITIES		
Cloud Services		Xerox® Easy Translator, Xerox® Healthcare MFP Solution (U.S. only), CapturePoint™ many additional services available
Xerox App Gallery		Many apps and cloud services available. Visit www.xerox.com/AppGallery for a growing selection of Xerox® apps available for adding functions.

¹ Declared print speed in accordance with ISO/IEC 24734. ² Maximum volume capacity expected in any one month. Not expected to be sustained on a regular basis; ³ Requires analog phone line; ⁴ Visit www.apple.com for AirPrint Certification list. ⁵ Optional download from Xerox App Gallery to the Printer — www.xerox.com/XeroxAppGallery.

Certifications

To view the latest list of certifications, go to www.xerox.com/OfficeCertifications.

Supplies

Standard Capacity Toner Cartridge:

Black: 10,300 pages⁶ 106R03940

High Capacity Toner Cartridge:

Black: 25,900 pages⁶ 106R03942

Extra High Capacity Toner Cartridge:

Black: 46,700 pages⁶ 106R03944

Drum Cartridge: 60,000 pages⁷ 101R00582

Options

550-sheet Feeder 097S04949

2,000-sheet High Capacity Feeder (includes Caster Base) 097S04948

Cabinet (includes Caster Base) 097S04955

Caster Base 097S04954

Finisher (500 sheets, 50-sheet stapler) 097S04952

4-Bin Mailbox (100 sheets per bin) 097S04953

Wireless Network Adapter (Wi-Fi Kit) 497K16750

RFID Card Reader Kit 497K18380

⁶ Average standard pages. Declared Yield in accordance with ISO/IEC 19752. Yield will vary based on image, area coverage and print mode.

⁷ Approximate pages. Declared yield will vary depending on job run length and media size/orientation and machine speed. For more information, visit <https://www.office.xerox.com/latest/SUPGL-01.PDF>.

Configurations vary by geography.

For more detailed specifications, go to www.xerox.com/VersaLinkB615Specs.

XEROX® VERSALINK® C600 COLOR PRINTER

DEVICE SPECIFICATIONS		VersaLink C600 Color Printer
Speed ¹		Up to 55 ppm letter/Up to 53 ppm A4
Duty Cycle ²		Up to 120,000 pages/month
Hard Drive / Processor / Memory		1.05 GHz/2 GB/optional 320 GB HDD
Connectivity		Ethernet 10/100/1000 Base-T, High-speed USB 3.0, Wi-Fi 802.11n and Wi-Fi Direct with optional Wi-Fi Kit (concurrent wired and wireless connections supported), NFC Tap-to-Pair
Controller Features		Configuration Cloning, Xerox Extensible Interface Platform®, Xerox® App Gallery App, Xerox® Standard Accounting Tool, Online Support
Paper Handling		Bypass Tray: Up to 150 sheets; Custom sizes: 3 x 5 in./76 x 127 mm to 216 x 356 mm
Paper Input	Standard	Tray 1: Up to 550 sheets; Custom sizes: 3 x 7.5 in./76 x 190 mm to 216 x 356 mm
	Optional	Up to 4 Additional Trays (1 Additional Tray standard on C600/DT): Up to 550 sheets; Custom sizes: 3 x 7.5 in./76 x 190 mm to 216 x 356 mm
		High Capacity Feeder: Up to 2,000 sheets; 8.5 x 11 in./216 x 356 mm to 210 x 297 mm
Paper Output	Standard	500 sheets
	Optional	Finisher: 500-sheet tray, 50-sheet stapling Mailbox: Four 100-sheet bins
Automatic Two-sided Output		Standard
Copy and Print	Resolution	Up to 1200 x 2400 dpi
First-Page-Out Time (as fast as)		As fast as 8 seconds color and black-and-white
Page Description Languages		PCL® 5e/PCL 6/PDF/XPS/TIFF/JPEG/HP-GL/Adobe® PostScript® 3™

INTUITIVE USER EXPERIENCE

Customize and Personalize		Walkup customization, Personalize Home Screen by User, Multiple Home Screens with Simple ID, Customize by Site and Function or Workflow with Xerox App Gallery
Print Drivers		Job Identification, Bi-directional Status, Job Monitoring and Xerox® Global Print Driver®
Xerox® Embedded Web Server		PC or mobile—Status Information, Responsive Design, Settings, Device Management, Cloning
Remote Console		Remote Control Panel
Print Features		Print from USB, Secure Print, Sample Set, Personal Print, Saved Job, Earth Smart Driver Settings, Job Identification, Booklet Creation, Store and Recall Driver Settings, Bi-directional Real-time Status, Scaling, Job Monitoring, Application Defaults, Two-sided Printing (as default), Skip Blank Pages, Draft Mode

MOBILE AND CLOUD READY

Mobile Printing		Apple® AirPrint® ³ , Google Cloud Print™ Ready, Mopria® Certified, Mopria® Print Service Plug-in for Android™, Xerox® @printbyXerox App, Xerox® Print Services plug-in for Android™
Mobility Options		Xerox® Mobile Print Solution and Xerox® Mobile Print Cloud App, Connect via NFC/Wi-Fi Direct Printing, Visit www.xerox.com/OfficeMobileApps for available apps
Cloud Connectors ⁴		Print from Google Drive™, Microsoft® OneDrive®, Dropbox™, Microsoft Office 365®, Box®, Xerox® DocuShare® Platform and more

BENCHMARK SECURITY

Network Security		IPsec, HTTPS, encrypted email, Network Authentication, SNMPv3, SSL/TLS, Security Certificates, Pre-installed Self-Signed Certificates, Cisco® Identity Services Engine (ISE) integration
Device Access		Firmware Verification, User access and internal firewall, Port/IP/Domain Filtering, Audit Log, Access Controls, User Permissions, Smart Card Enabled (CAC/PIV.NET), Xerox® Integrated RFID Card Reader, Trusted Platform Module (TPM)
Data Protection		Setup/Security Wizards, Job Level Encryption via HT TPS/IPPS submission, Encrypted hard disk (AES 256-bit, FIPS 140-2) and image overwrite, Encrypted Apps with Embedded Certificate Support
Document Security		Secure Print

ENABLES NEXT GENERATION SERVICES

Print Management		Xerox® Standard Accounting; Optional: Xerox® Workplace Cloud/Suite, Nuance Equitrac, Ysoft SafeQ, PaperCut and more at www.xerox.com/PrintManagement .
Fleet / Device Management		Xerox® Device Manager, Xerox® Support Assistant App, Auto Meter Read, Managed Print Services tools, Configuration Cloning
Sustainability		Cisco EnergyWise®, Earth Smart Printing, EPEAT-verified, Print User ID on margins

GATEWAY TO NEW POSSIBILITIES

Xerox App Gallery		Many apps and cloud services available. Visit www.xerox.com/AppGallery for a growing selection of Xerox® apps available for adding functions
-------------------	--	--

¹ Declared print speed in accordance with ISO/IEC 24734; ² Maximum volume capacity expected in any one month. Not expected to be sustained on a regular basis;

³ Visit www.apple.com for AirPrint Certification list. ⁴ Optional download from Xerox App Gallery to the Printer — www.xerox.com/xeroxAppGallery;

Certifications

To view the latest list of certifications, go to www.xerox.com/OfficeCertifications.

Supplies and Options

Standard Capacity Toner Cartridges:

Black: 6,000 pages ⁵	106R03899
Cyan: 6,000 pages ⁵	106R03896
Magenta: 6,000 pages ⁵	106R03897
Yellow: 6,000 pages ⁵	106R03898

High Capacity Toner Cartridges:

Black: 12,200 pages ⁵	106R03903
Cyan: 10,100 pages ⁵	106R03900
Magenta: 10,100 pages ⁵	106R03901
Yellow: 10,100 pages ⁵	106R03902

Extra High Capacity Toner Cartridges:

Black: 16,900 pages ⁵	106R03919
Cyan: 16,800 pages ⁵	106R03916
Magenta: 16,800 pages ⁵	106R03917
Yellow: 16,800 pages ⁵	106R03918

Cyan Drum Cartridge: 40,000 pages ⁶	108R01485
Magenta Drum Cartridge: 40,000 pages ⁶	108R01486
Yellow Drum Cartridge: 40,000 pages ⁶	108R01487
Black Drum Cartridge: 40,000 pages ⁶	108R01488
Waste Cartridge: 30,000 pages ⁶	108R01416

550-sheet Feeder	097504949
2,000-sheet High Capacity Feeder (includes Caster Base)	097504948
Cabinet (includes stabilizers)	097504994

Caster Base	097504954
Productivity Kit with 320 GB HDD	497K18360
Wireless Network Adapter (Wi-Fi Kit)	497K16750
External Card Reader / RFID Kit	497K18380

⁵ Average standard pages. Declared Yield in accordance with ISO/IEC 19798. Yield will vary based on image, area coverage and print mode.

⁶ Approximate pages. Declared yield will vary depending on job run length, media size/orientation and machine speed. For more information, visit <https://www.office.xerox.com/latest/SUPGL-01.PDF>.

Configurations vary by geography.

For more detailed specifications, go to www.xerox.com/VersaLinkC600Specs.

XEROX® VERSALINK® C605 COLOR MULTIFUNCTION PRINTER

DEVICE SPECIFICATIONS		VersaLink C605 Color Multifunction Printer
Speed ¹		Up to 55 ppm letter/Up to 53 ppm A4
Duty Cycle ²		Up to 120,000 pages/month ²
Processor / Memory / Hard Drive		1.05 GHz/4 GB/standard 320 GB HDD
Connectivity		Ethernet 10/100/1000 Base-T, High-speed USB 3.0, Wi-Fi 802.11n and Wi-Fi Direct with optional Wi-Fi Kit (concurrent wired and wireless connections supported), NFC Tap-to-Pair
Controller Features		Unified Address Book, Configuration Cloning, Scan Preview, Xerox Extensible Interface Platform®, Xerox® App Gallery App, Xerox® Standard Accounting, Online Support
Paper Handling		
Paper Input	Standard	Single-Pass Duplex Automatic Document Feeder (DADF): 100 sheets; Custom sizes: 5.5 x 5.5 in. to 8.5 x 14 in./140 x 140 mm to 216 x 356 mm Bypass Tray: Up to 150 sheets; Custom sizes: 3 x 5 in. to 8.5 x 14 in./76 x 127 mm to 216 x 356 mm Tray 1: Up to 550 sheets; Custom sizes: 3 x 7.5 in. to 8.5 x 14 in./76 x 190 mm to 216 x 356 mm
	Optional	Up to 4 Additional Trays: Up to 550 sheets; Custom sizes: 3 x 7.5 in. to 8.5 x 14 in./76 x 190 mm to 216 x 356 mm High Capacity Feeder: Up to 2,000 sheets; 8.5 x 11 in. to 8.27 x 11.69 in./216 x 356 mm to 210 x 297 mm
Paper Output	Standard	400 sheets
	Optional (Choose One)	Finisher (Requires C605/XL): 500-sheet tray, 50-sheet stapling Mailbox (Requires C605/XL): Four 100-sheet bins
Automatic Two-sided Output		Standard
Copy and Print	Resolution	Print: Up to 1200 x 2400 dpi; Copy: Up to 600 x 600 dpi
First-Page-Out Time (as fast as)		Print: As fast as 10 seconds color and black-and-white Copy: As fast as 7 seconds color/5 seconds black-and-white
Page Description Languages		PCL® 5e/PCL 6/PDF/XPS/TIFF/JPEG/HP-GL/Adobe® PostScript® 3™
INTUITIVE USER EXPERIENCE		
Customize and Personalize		Wakeup customization, Personalize Home Screen by User, Multiple Home Screens with Simple ID, Customize by Site and Function or Workflow with Xerox App Gallery
Print Drivers		Job Identification, Bi-directional Status, Job Monitoring and Xerox® Global Print Driver®
Xerox® Embedded Web Server		PC or mobile—Status Information, Responsive Design, Settings, Device Management, Cloning
Remote Console		Remote Control Panel
Preview		Preview of Scan/Fax with Zoom, Rotate, Add Page
Print Features		Print from USB, Secure Print, Sample Set, Personal Print, Saved Job, Earth Smart Driver Settings, Job Identification, Booklet Creation, Store and Recall Driver Settings, Bi-directional Real-time Status, Scaling, Job Monitoring, Application Defaults, Two-sided Printing (as default), Skip Blank Pages, Draft Mode
Scan		Optical Character Recognition (OCR), Scan to USB/Email/Network (FTP/SMB), File Formats: PDF, PDF/A, XPS, JPEG, TIFF; Convenience Features: Scan to Home, Searchable PDF, Single/Multi-Page PDF/XPS/TIFF/Password Protected PDF, Secure Scanning via SFTP
Fax ³		Walk-up Fax (includes LAN Fax, Direct Fax, Fax Forward to Email, Server Fax)
MOBILE AND CLOUD READY		
Mobile Printing		Apple® AirPrint®, Google Cloud Print™ Ready, Mopria® Certified, Mopria® Print Services plug-in for Android™, Xerox® @printbyXerox App, Xerox® Print Services plug-in for Android™
Mobility Options		Xerox® Mobile Print Solution and Xerox® Mobile Print Cloud App, Connect via NFC/Wi-Fi Direct Printing, Xerox® Mobile Link App. Visit www.xerox.com/OfficeMobileApps for available apps.
Cloud Connectors ⁵		Print from/Scan to Google Drive™, Microsoft® OneDrive®, Dropbox™, Microsoft Office 365®, Box®, Xerox® DocuShare® Platform and more
BENCHMARK SECURITY		
Network Security		IPsec, HTTPS, encrypted email, Network Authentication, SNMPv3, SSL/TLS, Security Certificates, Pre-installed Self-Signed Certificates, Cisco® Identity Services Engine (ISE) integration
Device Access		Firmware Verification, User access and internal firewall, Port/IP/Domain Filtering, Audit Log, Access Controls, User Permissions, Smart Card Enabled (CAC/PIV.NET), Xerox® Integrated RFID Card Reader, Trusted Platform Module (TPM)
Data Protection		Setup/Security Wizards, Job Level Encryption via HTTPS/IPPS submission, Encrypted hard disk (AES 256-bit, FIPS 140-2) and image overwrite, Common Criteria Certification (ISO 15408), Encrypted Apps with Embedded Certificate Support
Document Security		Secure Print, Secure Fax, Secure Email, Password Protected PDF
ENABLES NEXT GENERATION SERVICES		
Print Management		Xerox® Standard Accounting; Optional: Xerox® Workplace Cloud/Suite, Nuance Equitrac, Ysoft SafeQ, PaperCut and more at xerox.com/PrintManagement .
Fleet / Device Management		Xerox® Device Manager, Xerox® Support Assistance App, Auto Meter Read, Managed Print Services tools, Configuration Cloning
Sustainability		Cisco EnergyWise®, Earth Smart Printing, EPEAT-verified, Print User ID on margins
GATEWAY TO NEW POSSIBILITIES		
Cloud Services		Xerox® Easy Translator, Xerox® Healthcare MFP Solution (U.S. only), CapturePoint™, many additional services available
Xerox App Gallery		Many apps and cloud services available. Visit www.xerox.com/AppGallery for a growing selection of Xerox® apps available for adding functions

¹ Declared print speed in accordance with ISO/IEC 24734. ² Maximum volume capacity expected in any one month. Not expected to be sustained on a regular basis; ³ Requires analog phone line;

⁴ Visit www.apple.com for AirPrint Certification list. ⁵ Optional download from Xerox App Gallery to the Printer — www.xerox.com/XeroxAppGallery;

Certifications

To view the latest list of certifications, go to www.xerox.com/OfficeCertifications.

Supplies and Options

Standard Capacity Toner Cartridges:

Black: 6,000 pages ⁶	106R03899
Cyan: 6,000 pages ⁶	106R03896
Magenta: 6,000 pages ⁶	106R03897
Yellow: 6,000 pages ⁶	106R03898

High Capacity Toner Cartridges:

Black: 12,200 pages ⁶	106R03903
Cyan: 10,100 pages ⁶	106R03900
Magenta: 10,100 pages ⁶	106R03901
Yellow: 10,100 pages ⁶	106R03902

Extra High Capacity Toner Cartridges:

Black: 16,900 pages ⁶	106R03931
Cyan: 16,800 pages ⁶	106R03928
Magenta: 16,800 pages ⁶	106R03929
Yellow: 16,800 pages ⁶	106R03930
Cyan Drum Cartridge: 40,000 pages ⁷	108R01485
Magenta Drum Cartridge: 40,000 pages ⁷	108R01486
Yellow Drum Cartridge: 40,000 pages ⁷	108R01487
Black Drum Cartridge: 40,000 pages ⁷	108R01488
Waste Cartridge: 30,000 pages ⁷	108R01416

550-sheet Feeder	097S04949
2,000-sheet High Capacity Feeder (includes Caster Base)	097S04948
Cabinet (includes stabilizers)	097S04994
Caster Base	097S04954
Productivity Kit with 320 GB HDD	497K18360
Wireless Network Adapter (Wi-Fi Kit)	497K16750
Internal Card Reader / RFID Kit	497K18120

⁶ Average standard pages. Declared Yield in accordance with ISO/IEC 19798. Yield will vary based on image, area coverage and print mode.

⁷ Approximate pages. Declared yield will vary depending on job run length, media size/orientation and machine speed. For more information, visit <https://www.office.xerox.com/Latest/SUPGL-01.PDF>.

Configurations vary by geography.

For more detailed specifications, go to www.xerox.com/VersaLinkC605Specs.

XEROX® VERSALINK® B7025/B7030/B7035 MULTIFUNCTION PRINTER

DEVICE SPECIFICATIONS	VersaLink B7025	VersaLink B7030	VersaLink B7035
Speed ¹	Up to 25 ppm	Up to 30 ppm	Up to 35 ppm
Monthly Duty Cycle ²	Up to 107,000 pages ²	Up to 129,000 pages ²	Up to 153,000 pages ²
Hard Drive / Processor / Memory	320 GB HDD ² /1.05 GHz Dual-core/2 GB memory		
Connectivity	Ethernet 10/100/1000 Base-T, High-speed USB 3.0, Wi-Fi® and Wi-Fi Direct® with optional Wi-Fi Kit		
Controller Features	Unified Address Book, Configuration Cloning, Scan Preview, Xerox Extensible Interface Platform®, Xerox® App Gallery App, Xerox® Standard Accounting Tool, Role Based Permissions, Convenience Authentication Enabled, Online Support		
Copy and Print Resolution	Copy: Up to 600 x 600 dpi; Print: Up to 1200 x 1200 dpi		
First-Copy-Out Time (as fast as)	As fast as 6.8 seconds	As fast as 5.4 seconds	As fast as 5.4 seconds
First-Print-Out Time	As fast as 10.4 seconds	As fast as 9.1 seconds	As fast as 9.1 seconds
Page Description Languages	PCL® 5e/PCL 6/PDF/XPS/TIFF/JPEG/HP-GL/optional Adobe® PostScript® 3™		
Paper Input Standard	Duplex Automatic Document Feeder (DADF): 110 sheets; Standard sizes: 5.5 x 8.5 in. to 11 x 17 in./A5 to A3; Custom sizes (duplex): 4.92 x 4.33 in. to 11.69 x 17 in./125 x 110 mm to 297 x 431.8 mm; Custom sizes (simplex): 4.92 x 3.35 in. to 11.69 x 17 in./125 x 85 mm to 297 x 431.8 mm		
	Bypass Tray: 100 sheets; Custom sizes: 3.5 x 3.87 in. to 11.69 x 17 in./88.9 x 98.4 mm to 297 x 431.8 mm		
	Tray 1: 520 sheets; Custom sizes: 5.5 x 7.17 in. to 11.69 x 17 in./139.7 x 182 mm to 297 x 431.8 mm		
Choose One	Single Tray Module: 520 sheets; Custom sizes: 5.5 x 7.17 in. to 11.69 x 17 in./139.7 x 182 mm to 297 x 431.8 mm		
	Single Tray with Stand: 520 sheets; Custom sizes: 5.5 x 7.17 in. to 11.69 x 17 in./139.7 x 182 mm to 297 x 431.8 mm		
	Three Tray Module (1,560 sheets): 520 sheets each; Custom sizes: 5.5 x 7.17 in. to 11.69 x 17 in./139.7 x 182 mm to 297 x 431.8 mm		
	High-Capacity Tandem Tray (2,520 sheets): Tray 2: 520 sheets; Custom sizes: 5.5 x 7.17 in. to 11.69 x 17 in./139.7 x 182 mm to 297 x 431.8 mm; Tray 3: 870 sheets; Standard sizes: 8.5 x 11 in. and 7.25 x 10.5 in./A4 or B5; Tray 4: 1,130 sheets; Standard sizes: 8.5 x 11 in. and 7.25 x 10.5 in./A4 or B5		
Optional	Envelope Tray: Up to 60 envelopes: #10 commercial, Monarch, DL, C5; Custom sizes: 3.9 x 5.8 in. to 6.4 x 9.5 in./98 x 148 mm to 162 x 241 mm		
	High-Capacity Feeder (HCF): 2,000 sheets; Standard sizes: 8.5 x 11 in. and 7.25 x 10.5 in./A4 or B5		
Paper Output / Finishing Standard	Dual Catch Tray²: 250 sheets each; Lower tray offsets		
Optional	Integrated Office Finisher: 500-sheet stacker, 50 sheets stapled, single-position stapling		
	Office Finisher LX: 2,000-sheet stacker, 50 sheets stapled, 3-position stapling, optional hole-punch, optional booklet maker (score, saddle stitch)		
	Convenience Stapler with Work Surface: Staples 50 sheets		
INTUITIVE USER EXPERIENCE			
Customize and Personalize	Walkup customization, Personalize Home Screen by User, Multiple Home Screens with Simple ID, Customize by Site and Function or Workflow with Xerox App Gallery		
Print Drivers	Job Identification, Bi-directional Status, Job Monitoring and Xerox® Global Print Driver®		
Xerox® Embedded Web Server	PC or mobile—Status Information, Responsive Design, Settings, Device Management, Cloning		
Remote Console	Remote Control Panel		
Preview	Preview of Scan/Fax with Zoom, Rotate, Add Page		
Print Features	Print from USB, Secure Print, Sample Set, Personal Print, Saved Job, Earth Smart Driver Settings, Job Identification, Booklet Creation, Store and Recall Driver Settings, Bi-directional Real-time Status, Scaling, Job Monitoring, Application Defaults, Two-sided Printing (as default), Skip Blank Pages, Draft Mode		
Scan	Optical Character Recognition (OCR), Scan to USB/Email/Network (FTP/SMB), Scan File Formats: PDF, PDF/A, XPS, JPEG, TIFF; Convenience Features: Scan to Home, Searchable PDF, Single/Multi-Page PDF/XPS/TIFF/Password Protected PDF, Secure Scanning via SFTP		
Fax ³	Optional Walk-up Fax (one-line or three-line options available, includes LAN Fax, Direct Fax, Fax Forward to Email, Server Fax), optional Fax Over IP		
MOBILE AND CLOUD READY			
Mobile Printing	Apple® AirPrint®, Google Cloud Print™ Ready, Mopria® Certified, Mopria® Print Service Plug-in for Android™, Xerox® @printbyXerox App, Xerox® Print Services plug-in for Android™		
Mobility Options	Xerox® Mobile Print Solution and Xerox® Mobile Print Cloud App, Connect via NFC/Wi-Fi Direct Printing, Xerox® Mobile Link App. Visit www.xerox.com/OfficeMobileApps for available apps.		
Cloud Connectors ⁵	Print from/Scan to Google Drive™, Microsoft® OneDrive®, Dropbox™, Microsoft Office 365®, Box®, Xerox® DocuShare® Platform and more		
BENCHMARK SECURITY			
Network Security	IPsec, HTTPS, encrypted email, Network Authentication, SNMPv3, SSL/TLS, Security Certificates, Pre-installed Self-signed Certificates, Cisco® Identity Services Engine (ISE) integration		
Device Access	Firmware Verification, User access and internal firewall, Port/IP/Domain Filtering, Audit Log, Access Controls, User Permissions, Smart Card Enabled (CAC/PIV/.NET), Xerox® Integrated RFID Card Reader, Trusted Platform Module (TPM)		
Data Protection	Setup/Security Wizards, Job Level Encryption via HTTPS/IPPS submission, Encrypted hard disk (AES 256-bit, FIPS 140-2) and image overwrite, Common Criteria Certification (ISO 15408), Encrypted Apps with Embedded Certificate Support		
Document Security	Secure Print, Secure Fax, Secure Email, Password Protected PDF		
ENABLES NEXT GENERATION SERVICES			
Print Management	Xerox® Standard Accounting; Optional: Xerox® Workplace Cloud/Suite, Nuance Equitrac, Ysoft SafeQ, PaperCut and more at www.xerox.com/PrintManagement .		
Fleet / Device Management	Xerox® Device Manager, Xerox® Support Assistant App, Auto Meter Read, Managed Print Services tools, Configuration Cloning		
Sustainability	Cisco EnergyWise®, Earth Smart Printing, EPEAT-verified, Print User ID on margins		
GATEWAY TO NEW POSSIBILITIES			
Cloud Services	Xerox® Easy Translator, Xerox® Healthcare MFP Solution (U.S. only), CapturePoint™, many additional services available		
Xerox App Gallery	Many apps and cloud services available. Visit www.xerox.com/AppGallery for a growing selection of Xerox® apps available for adding functions to the Printer/MFP.		

¹ Declared print speed in accordance with ISO/IEC 24734. ² Maximum volume capacity expected in any one month. Not expected to be sustained on a regular basis; ³ Requires analog phone line;

⁴ Visit www.apple.com for AirPrint Certification list; ⁵ Optional download from Xerox App Gallery to the Printer — www.xerox.com/xeroxappgallery.

For more detailed specifications, go to www.xerox.com/VersaLinkB7000Specs.

XEROX® VERSALINK® C8000 AND C9000 COLOR PRINTERS

DEVICE SPECIFICATIONS	VersaLink C8000	VersaLink C9000
Speed ¹	Up to 45 ppm letter/A4	Up to 55 ppm letter/A4
Monthly Duty Cycle ²	205,000	270,000
Hard Drive/Processor/Memory	Optional 320 GB HDD/1.6 GHz/4 GB	320 GB HDD/1.6 GHz/4 GB
Connectivity	Ethernet 10/100/1000Base-T, High-speed USB 3.0, Wi-Fi® and Wi-Fi Direct® with optional Wi-Fi Kit, NFC Tap-to-Pair	
Controller Features	Configuration Cloning, Xerox Extensible Interface Platform®, Xerox® App Gallery App, Xerox® Standard Accounting Tool, Role Based Permissions, Convenience Authentication Enabled	
Print Resolution	Up to 1200 x 2400 dpi	
First-print-out Time	As fast as 11 seconds color/11 seconds black and white	As fast as 10.5 seconds color/10 seconds black and white
Page Description Languages	PCL® 5c/PCL 6/PDF/XPS/TIFF/JPEG/HP-GL®/Adobe® PostScript® 3™	
Color Management	Embedded spot color table, Xerox Color Corrections	Embedded spot color table with the ability to swap out PANTONE® approved color table, Custom spot color editor, optional Xerox® Precise Color Management System software
Paper Input	Standard Bypass Tray: Up to 100 sheets; Custom sizes: 3.5 x 3.9 in. to 12.6 x 19 in./88.9 x 98.4 mm to 320 x 482.6 mm; Banners: 12.6 x 52 in./320 x 1,320.8 mm (C8000: 64 to 300 gsm; C9000: 64 to 350 gsm) Tray 1: Up to 520 sheets; Custom sizes: 3.9 x 5.8 in. to 11.7 x 17 in./100 x 148 mm to 297 x 431.8 mm (64 to 300 gsm) Tray 2: Up to 520 sheets; Custom sizes: 3.9 x 5.8 in. to 12.6 x 18 in./100 x 148 mm to 320 x 457.2 mm (64 to 300 gsm)	Optional Two Tray Module: Up to 1,040 sheets; Custom sizes: 3.9 x 5.8 in. to 12.6 x 18 in./100 x 148 mm to 320 x 457.2 mm (64 to 300 gsm) Tandem Tray Module: Up to 2,000 sheets; 8.5 x 11 in., 7.25 x 10.5 in./A4, B5 (64 to 300 gsm) High Capacity Feeder: Up to 2,000 sheets; 8.5 x 11 in., 7.25 x 10.5 in./A4, B5 (64 to 216 gsm) Envelope Tray (replaces Tray 1): Up to 50 envelopes: #10 Commercial, Monarch, DL, C4, C5, C6 (75 to 90 gsm)
Paper Output/Finishing	Standard Dual Offset Catch Tray (standard when finishers are not attached): 250 sheets each	Optional Office Finisher: 2,000-sheet stacker, 50 sheets stapled, 3-position stapling, optional hole punch, optional booklet maker (score, saddle stitch) BR Booklet Maker Finisher: 1,500-sheet stacker and 500-sheet top tray, 50-sheet multiposition stapling and 2/3-hole punching plus saddle-stitch booklet making (2 to 16 sheets, 64 pages) and V-folding
Automatic Two-sided Printing	Standard	
INTUITIVE USER EXPERIENCE		
Customize and Personalize	Walkup customization, Personalize Home Screen by User, Multiple Home Screens with Simple ID, Customize by Site, Function or Workflow with Xerox App Gallery and Xerox® App Studio	
Print Drivers	Job Identification, Bi-directional Status, Job Monitoring and Xerox® Global Print Driver®	
Xerox® Embedded Web Server	PC or mobile—Status Information, Responsive Design, Settings, Device Management, Cloning	
Remote Console	Remote Control Panel	
Print Features	Print from USB, Secure Print, Sample Set, Personal Print, Saved Job, Earth Smart Driver Settings, Job Identification, Booklet Creation, Store and Recall Driver Settings, Bi-directional Real-time Status, Scaling, Job Monitoring, Application Defaults, Two-sided Printing (DN configuration), Skip Blank Pages, Draft Mode	
MOBILE AND CLOUD READY		
Mobile Printing	Apple® AirPrint® ³ , Google Cloud Print™ Ready, Xerox® Print Services plug-ins for Android™, Mopria® Print Service Plug-ins for Android™, Xerox® @printbyXerox App	
Mobility Options	Xerox® Mobile Print and Mobile Print Cloud, Connect via NFC/Wi-Fi Direct Printing. Visit www.xerox.com/officemobileapps for available apps.	
Cloud Connectors ⁴	Print from Google Drive™, Microsoft® OneDrive®, Dropbox™, Microsoft Office 365®, Box®, Xerox® DocuShare® Platform and more	
BENCHMARK SECURITY		
Network Security	IPsec, HTTPS, Network Authentication, SNMPv3, SSL/TLS, Security Certificates, Pre-installed Self-signed Certificates	
Device Access	Firmware Verification, User access and internal firewall, Port/IP/Domain Filtering, Audit Log, Access Controls, User Permissions, Smart Card-Enabled (CAC/PIV/.NET), Xerox® Integrated RFID Card Reader, Trusted Platform Module (TPM)	
Data Protection	Setup/Security Wizards, Job Level Encryption via HTTPS/IPPS submission, Encrypted hard disk (AES 256-bit, FIPS 140-2) and image overwrite ⁵ , Encrypted Apps with Embedded Certificate Support	
Document Security	Secure Print	
ENABLES NEXT GENERATION SERVICES		
Print Management	Xerox® Standard Accounting; Optional: Xerox® Workplace Cloud/Suite, Nuance Equitrac, Ysoft SafeQ, PaperCut and more at www.xerox.com/PrintManagement .	
Managing Print	Xerox® Device Manager, Xerox® Support Assistant App, Auto Meter Read, Managed Print Services tools	
Sustainability	Cisco EnergyWise®, Earth Smart Printing, EPEAT-verified, Print User ID on margins	
GATEWAY TO NEW POSSIBILITIES		
Xerox App Gallery	Many apps and cloud services available. Visit www.xerox.com/appgallery for a growing selection of Xerox® apps available for adding functions.	

¹ Declared print speed in accordance with ISO/IEC 24734. ² Maximum volume capacity expected in any one month. Not expected to be sustained on a regular basis; ³ Visit www.apple.com for AirPrint Certification list ⁴ Optional download from Xerox App Gallery to the Printer — www.xerox.com/xeroxappgallery; ⁵ HDD required for image overwrite.

Certifications

To view the latest list of certifications, go to www.xerox.com/OfficeCertifications.

Supplies

Standard Capacity Toner Cartridges for C8000:

Black: 12,600 pages ⁶	106R04037
Cyan: 7,600 pages ⁶	106R04034
Magenta: 7,600 pages ⁶	106R04035
Yellow: 7,600 pages ⁶	106R04036

High Capacity Toner Cartridges for C8000:

Black: 20,900 pages ⁶	106R04049
Cyan: 16,500 pages ⁶	106R04046
Magenta: 16,500 pages ⁶	106R04047
Yellow: 16,500 pages ⁶	106R04048

Standard Capacity Toner Cartridges for C9000:

Black: 18,900 pages ⁶	106R04065
Cyan: 12,300 pages ⁶	106R04062
Magenta: 12,300 pages ⁶	106R04063
Yellow: 12,300 pages ⁶	106R04064

High Capacity Toner Cartridges for C9000:

Black: 31,400 pages ⁶	106R04077
Cyan: 26,500 pages ⁶	106R04074
Magenta: 26,500 pages ⁶	106R04075
Yellow: 26,500 pages ⁶	106R04076

Routine Maintenance Items:

Drum Cartridge: 190,000 pages each color ⁷	101R00602
190,000 pages black ⁷	108R01504
Waste Cartridge: Up to 47,000 pages ⁷	104R00256
IBT Cleaner: Up to 160,000 pages ⁷	116R00015
Transfer Roller: Up to 200,000 pages ⁷	

Options

Xerox® Precise Color Management System software for C9000DT	097S04974
Two Tray Module	097S04969
Tandem Tray Module	097S04970
High Capacity Feeder	097S04845
Envelope Tray (Replaces Tray 1)	497K17880
Office Finisher (includes Gap Filler)	497K21010
2/3 Hole Punch for Office Finisher	497K03860
Booklet Maker for Office Finisher	497K03852
Booklet Maker Finisher with 2/3 Hole Punch (comes with Horizontal Transport)	497K21000
HDD (320 GB Hard Drive for C8000)	097S04971
Wireless Network Adapter (Wi-Fi Kit)	497K16750
Internal Card Reader/RFID Kit	497K18120

Configurations vary by geographical location.

For more detailed specifications, go to www.xerox.com/C8000PrinterSpecs or www.xerox.com/C9000PrinterSpecs.

XEROX® VERSALINK® C7020/C7025/C7030 COLOR MULTIFUNCTION PRINTER

DEVICE SPECIFICATIONS	VersaLink C7020	VersaLink C7025	VersaLink C7030
Speed ¹	Up to 20 ppm	Up to 25 ppm	Up to 30 ppm
Monthly Duty Cycle ²	Up to 87,000 pages ²	Up to 107,000 pages ²	Up to 129,000 pages ²
Hard Drive / Processor / Memory	320 GB HDD ⁶ /1.05 GHz Dual-core/4 GB memory		
Connectivity	Ethernet 10/100/1000 Base-T, High-speed USB 3.0, Wi-Fi® and Wi-Fi Direct® with optional Wi-Fi Kit, NFC Tap-to-Pair		
Controller Features	Unified Address Book, Configuration Cloning, Scan Preview, Xerox Extensible Interface Platform®, Xerox® App Gallery App, Xerox® Standard Accounting Tool, Role Based Permissions, Convenience Authentication Enabled, Online Support		
Copy and Print Resolution	Copy: Up to 600 x 600 dpi; Print: Up to 1200 x 2400 dpi		
First-Copy-Out Time (as fast as)	As fast as 9.0 seconds color/6.9 seconds black-and-white		As fast as 7.2 seconds color/ 5.8 seconds black-and-white
First-Print-Out Time	As fast as 9.4 seconds color/ 7.2 seconds black-and-white	As fast as 9.4 seconds color/ 7.1 seconds black-and-white	As fast as 7.3 seconds color/ 5.6 seconds black-and-white
Page Description Languages	PCL® 5e/PCL 6/PDF/XPS/TIFF/JPEG/HP-GL/optional Adobe® PostScript® 3™		
Paper Input Standard	Duplex Automatic Document Feeder (DADF): 110 sheets; Speed: up to 55 ipm; Custom sizes (duplex): 4.92 x 4.33 in. to 11.69 x 17 in./125 x 110 mm to 297 x 431.8 mm; Custom sizes (simplex): 4.92 x 3.35 in. to 11.69 x 17 in./125 x 85 mm to 297 x 431.8 mm		
	Bypass Tray: 100 sheets; Custom sizes: 3.5 x 3.87 in. to 11.69 x 17 in./88.9 x 98.4 mm to 297 x 431.8 mm		
	Tray 1: 520 sheets; Custom sizes: 5.5 x 7.17 in. to 11.69 x 17 in./139.7 x 182 mm to 297 x 431.8 mm		
Choose One	Single Tray Module: 520 sheets; Custom sizes: 5.5 x 7.17 in. to 11.69 x 17 in./139.7 x 182 mm to 297 x 431.8 mm Single Tray with Stand: 520 sheets; Custom sizes: 5.5 x 7.17 in. to 11.69 x 17 in./139.7 x 182 mm to 297 x 431.8 mm Three Tray Module (1,560 sheets): 520 sheets each; Custom sizes: 5.5 x 7.17 in. to 11.69 x 17 in./139.7 x 182 mm to 297 x 431.8 mm High Capacity Tandem Tray (2,520 sheets): Tray 2: 520 sheets; Custom sizes: 5.5 x 7.17 in. to 11.69 x 17 in./139.7 x 182 mm to 297 x 431.8 mm; Tray 3: 870 sheets; Standard sizes: 8.5 x 11 in. and 7.25 x 10.5 in./A4 or B5; Tray 4: 1,130 sheets; Standard sizes: 8.5 x 11 in. and 7.25 x 10.5 in./A4 or B5		
Optional	Envelope Tray: Up to 60 envelopes: #10 commercial, Monarch, DL, C5; Custom sizes: 3.9 x 5.8 in. to 6.4 x 9.5 in./98 x 148 mm to 162 x 241 mm High Capacity Feeder (HCF): 2,000 sheets; Standard sizes: 8.5 x 11 in. and 7.25 x 10.5 in./A4 or B5		
Paper Output / Finishing Standard	Dual Catch Tray⁶: 250 sheets each; Lower tray offsets		
Optional	Integrated Office Finisher: 500-sheet stacker, 50 sheets stapled, single-position stapling Office Finisher LX: 2,000-sheet stacker, 50 sheets stapled, 3-position stapling, optional hole-punch, optional booklet maker (score, saddle stitch) Convenience Stapler and Work Surface: Staples 50 sheets		

INTUITIVE USER EXPERIENCE

Customize and Personalize	Walkup customization, Personalize Home Screen by User, Multiple Home Screens with Simple ID, Customize by Site, and Function or Workflow with Xerox App Gallery
Print Drivers	Job Identification, Bi-directional Status, Job Monitoring and Xerox® Global Print Driver®
Embedded Web Server	PC or mobile — Status Information, Responsive Design, Settings, Device Management, Cloning
Remote Console	Remote Control Panel
Preview	Preview of Scan/Fax with Zoom, Rotate, Add Page
Print Features	Print from USB, Secure Print, Sample Set, Personal Print, Saved Job, Earth Smart Driver Settings, Job Identification, Booklet Creation, Store and Recall Driver Settings, Bi-directional Real-time Status, Scaling, Job Monitoring, Application Defaults, Two-sided Printing (as default), Skip Blank Pages, Draft Mode
Scan	Optical Character Recognition (OCR), Scan to USB/Email/Network (FTP/SMB), Scan File Formats: PDF, PDF/A, XPS, JPEG, TIFF; Convenience Features: Scan to Home, Searchable PDF, Single/Multi-Page PDF/XPS/TIFF/Password Protected PDF
Fax ³	Optional Walk-up Fax (one-line or three-line options available, includes LAN Fax, Direct Fax, Fax Forward to Email, Server Fax), optional Fax Over IP

MOBILE AND CLOUD READY

Mobile Printing	Apple® AirPrint® ⁴ , Google Cloud Print™ Ready, Mopria® Certified, Mopria® Print Services plug-in for Android™, Xerox® @printbyXerox App, Xerox® Print Services plug-in for Android™
Mobility Options	Xerox® Mobile Print and Mobile Print Cloud, Connect via NFC/Wi-Fi Direct Printing, Xerox® Mobile Link App. Visit www.xerox.com/OfficeMobileApps for available apps.
Cloud Connectors ⁵	Print from/Scan to Google Drive™, Microsoft® OneDrive®, Dropbox™, Microsoft Office 365®, Box®, Xerox® DocuShare® Platform and more

BENCHMARK SECURITY

Network Security	IPsec, HTTPS, encrypted email, Network Authentication, SNMPv3, SSL/TLS, Security Certificates, Pre-installed Self-signed Certificates, Cisco® Identity Services Engine (ISE) integration
Device Access	Firmware Verification, User access and internal firewall, Port/IP/Domain Filtering, Audit Log, Access Controls, User Permissions, Smart Card Enabled (CAC/PIV/.NET), Xerox® Integrated RFID Card Reader, Trusted Platform Module (TPM)
Data Protection	Setup/Security Wizards, Job Level Encryption via HTTPS/IPPS submission, Encrypted hard disk (AES 256-bit, FIPS 140-2) and image overwrite, Common Criteria Certification (ISO 15408), Encrypted Apps with Embedded Certificate Support
Document Security	Secure Print, Secure Fax, Secure Email, Password Protected PDF

ENABLES NEXT GENERATION SERVICES

Print Management	Xerox® Standard Accounting Tool, Optional: Xerox® Workplace Cloud/Suite, Nuance Equitrac, Ysoft SafeQ, PaperCut and more at www.xerox.com/PrintManagement .
Fleet / Device Management	Xerox® Device Manager, Xerox® Support Assistant App, Auto Meter Read, Managed Print Services tools, Configuration Cloning
Sustainability	Cisco EnergyWise®, Earth Smart Printing, EPEAT-verified, Print User ID on margins

GATEWAY TO NEW POSSIBILITIES

Cloud Services	Xerox® Easy Translator, Xerox® Healthcare MFP Solution (U.S. only), CapturePoint™, many additional services available
Xerox App Gallery	Many apps and cloud services available. Visit www.xerox.com/AppGallery for a growing selection of Xerox® apps available for adding functions.

¹ Declared print speed in accordance with ISO/IEC 24734. ² Maximum volume capacity expected in any one month. Not expected to be sustained on a regular basis; ³ Requires analog phone line;

⁴ Visit www.apple.com for AirPrint Certification list; ⁵ Optional download from Xerox App Gallery to the Printer — www.xerox.com/XeroxAppGallery; ⁶ HDD and Dual Catch Tray are optional on Desktop model.

For more detailed specifications, go to www.xerox.com/VersaLinkC7000Specs.

Awards

2019 Summer Pick Awards



XEROX® VERSALINK® C8000DT

Outstanding Tabloid Color Printer for Large Workgroups

[2019 Article](#) [2019 Certificate](#)



XEROX® VERSALINK® C9000DT

Outstanding Tabloid Color Printer for Enterprise Environments

[2019 Article](#) [2019 Certificate](#)

2018 Winter Pick Awards



XEROX® VERSALINK® C505

Outstanding Color Multifunction Printer for Mid-Size Workgroups

[2018 Article](#) [2018 Certificate](#)



XEROX® VERSALINK® C7025

Outstanding 25-ppm Color Copier MFP

[2018 Article](#) [2018 Certificate](#)

2017 Summer Pick Awards



XEROX® VERSALINK® B400

Outstanding Printer for Mid-Size Workgroups

[2017 Article](#) [2017 Certificate](#)



XEROX® VERSALINK® C400

Outstanding Color Printer for Mid-Size Workgroups

[2017 Article](#) [2017 Certificate](#)



XEROX® VERSALINK® C405

Outstanding Color Multifunction Printer for Mid-Size Workgroups

[2017 Article](#) [2017 Certificate](#)

2018 BLI Winter Pick Awards for Exceptional Color Printers and MFPs

XEROX® VERSALINK® C500

Outstanding Color Printer for Mid-Size Workgroups

[Award Flyer](#)

XEROX® VERSALINK® C600

Outstanding Color Printer for Large Workgroups

[Award Flyer](#)

2018 BLI Winter Pick Awards for Exceptional Copier MFPs

XEROX® VERSALINK®

B7025/B7035

Outstanding 25-ppm and 35-ppm Copier MFPs

[Award Flyer](#)

XEROX® VERSALINK® C7020

Outstanding 20-ppm Color Copier MFP

[Award Flyer](#)

2018 Winter Pick Award for Exceptional Monochrome Printer and MFP

XEROX® VERSALINK®

B600/B605

[Award Flyer](#)

2018 Better Buys for Business Innovative Product of the Year Award

XEROX® VERSALINK®

B7025/B7030/B7035

Black-and-white MFP category

[Award Flyer](#)

2018 Better Buys for Business Editor's Choice Award

XEROX® VERSALINK® C505

[Award Flyer](#)

2017 Better Buys for Business Editor's Choice Awards

XEROX® VERSALINK®

B400/B405

[Award Flyer](#)

XEROX® VERSALINK®

B7025/B7030/B7035

[Award Flyer](#)

XEROX® VERSALINK®

C400/C405

[Award Flyer](#)

Awards

2017 – 2018 BLI PaceSetter Awards



DOCUMENT IMAGING SECURITY CATEGORY

[2017 Article](#) [2017 Certificate](#)



MOBILE PRINT CATEGORY

[2017 Article](#) [2017 Certificate](#)



MFP PLATFORMS AND APP ECOSYSTEMS CATEGORY

[2017 Article](#) [2017 Certificate](#)



2014, 2015, 2016 AND 2017 BLI DOCUMENT IMAGING SOFTWARE LINE OF THE YEAR

[2017 Article](#) [2017 Certificate](#)



XEROX® CONNECTKEY® TECHNOLOGY

Outstanding Achievement in Innovation, Summer 2016

[2016 Article](#) [2016 Certificate](#)



XEROX® EASY TRANSLATOR SERVICE

Outstanding Achievement in Innovation, Summer 2016

[2016 Article](#) [2016 Certificate](#)



XEROX® APP STUDIO

Outstanding Achievement in Innovation, 2015

[2015 Article](#) [2015 Certificate](#)

Read more about our award winning products and solutions in our [Awards Brochure](#).

For more information visit us at www.connectkey.com.